

ABET

Institutional Summary

for the

FACULTY OF MINES

at

ISTANBUL TECHNICAL UNIVERSITY

İTÜ Ayazağa Campus
Maslak 34469 Istanbul, Turkey



submitted

July 2010

Prepared by
H. İlyas ÇAĞLAR
Nilgün OKAY

Faculty of Mines Istanbul Technical University

THE INSTITUTION



Faculty of Mines

Istanbul Technical University (İTÜ)

Ayazağa Campus

Maslak 34469 Istanbul, Turkey

madendek@itu.edu.tr

www.mines.edu.tr

Prof. H. Ilyas Çağlar, *Dean*

Dean's Office

e-mail: caglar@itu.edu.tr

Phone: +90(212)285-60 60

Fax: +90(212)285-60 80

Dean's Message



“Investigation secrets of nature by protecting its resource and livings coherently...”

We all know that we cannot maintain a sustainable development without respecting the nature. Our primary goal is to teach to our students how to discover the secrets of the earth and how to explore the natural sources for the future while protecting the environment. Yet, we expect our graduates to reach to the different areas of Turkey and world, and use their knowledge to supply human kind with necessary natural sources and different forms of energy.

The Faculty of Mines is fully committed to providing a high quality education and experience in five engineering degree programs (Mining Engineering, Geological Engineering, Petroleum and Natural Gas Engineering, Geophysical Engineering, and Mineral Processing Engineering). All the departments are highly specialized in different fields and scientifically and internationally very well recognized with their research projects and publications, and are fully engaged in using continuous assessment process to improve these programs.

The Faculty of Mines recognizes the value of continuously interaction with members of business and industry, and with alumni, and follows one basic goal in all its activities, such as close relations between education and research, therefore it is aimed that all faculty members take part in the research projects and publish the results of their researches in both national and international journals. More than about 500 international papers were published by the faculty in well-known scientific journals. All the departments have large research capacity, which is offered to companies to solve any different kind of industrial problems.

Advisory boards for five programs, each consisting of a blend of alumni and non-alumni from corporate partners of the College. Alumni are engaged in recruiting future students, providing internships and co-ops, hiring graduates, continuing education, scholarship support, providing research grants and contracts, delivering seminars, and serving on various advisory boards and committees.

At its 57th year, the Mining Faculty is more prosperous than ever with its students, academic people, alumni, and faculty staff. Let's keep this creative, scientific, and productive atmosphere of the Mining Faculty today and carry the knowledge and our traditions to the future.

Prof. H. Ilyas Çağlar, Dean
June 2010

INSTITUTIONAL SUMMARY

Type of Control

Istanbul Technical University (İTÜ) is a state school and is controlled administratively and financially by the Council of the Higher Education (YÖK). The Dean of the Faculty of Mines is under the jurisdiction of the provost of the university in terms of its academic affairs.

History of Institution

Strongly dedicated to the engineering education in Turkey, İTÜ provides its students with modern educational facilities while retaining traditional values, as well as using its strong international contacts to mould young, talented individuals who can compete in the global arena. İTÜ has constantly lead the way in reform movements, and in the latter era of the Republic of Turkey, İTÜ has always pivotal roles in the reconstruction, modernization, and administration of the country. The efforts and expertise of İTÜ graduates have been major contributors in the planning and construction of Turkey's roads, bridges, dams, factories, buildings.

In the early days, the Higher School of Mining and Industry was established in Zonguldak in 1924, but it was closed down in a short period. Immediately after the establishment of the Mineral Research and Exploration Institute (MTA) in 1935, a large number of students were sent to the Europe and U.S. in the areas of earth sciences and mining. The returning students in 1940's with degrees taken from prestigious schools in earth sciences and mining in the world took important roles in Turkey's newly founded establishments.

In 1951, the former Higher School of Mining and Industry was re-established as Zonguldak Mining Technical School under the Ministry of National Education. This institution was joined to the İTÜ Maçka Technical School in 1962. Although, several numbers of institutions were established and re-established in this period, however, the continuous Mining Engineering Education was started in the İTÜ.

In the early days of the Turkish Republic, the Higher School of Mining and Industry was established in Zonguldak in 1924, but it was also closed after a short period. After the establishment of the Mineral Research and Exploration Survey (MTA) in 1935, a large number

of students were sent to the Europe and the U.S. in the areas of earth sciences and mining. The returning students in 1940's with degrees taken from famous schools in earth sciences and mining in the world took important roles in Turkey's newly founded establishments.



İTÜ became an autonomous university in 1946, which included the schools of Architecture, Civil Engineering, Mechanical Engineering, and Electrical and Electronic Engineering. In 1953 the Faculty of Mines was founded as fifth school by a specific law. The education of mining engineering started in Taşkışla Building, later established in Maçka Building in 1961 and then moved to Maslak, Ayazağa Campus later in 1988. Meanwhile, first undergraduate students were accepted in 1953; and a group of faculty also joined: Prof. Malik Sayar, Ord. (*Emeritus*) Prof. Hulki Eren, Ord. Prof. Salih Murat Uzdilek, Prof. İhsan Ketin, Prof. İlhami Cıvaoğlu, Prof. Nusret Kürkçüoğlu, Assoc. Prof. Kemal Erguvanlı, Assoc. Prof. Remziye Hisar (*Mrs*), Assoc. Prof. Celal Erkman, Assoc. Prof. Mehmet Öğder, and Assoc. Prof. Saime Ergener (*Mrs*).

After 1961, Metallurgical Engineering, Petroleum Engineering and Geological Engineering Departments were established within the Faculty. In 1963 Mineral Processing and Metallurgy laboratories were founded. In 1974, Geophysical Engineering program was started. The Department of Metallurgy was separated later from the Faculty in 1977 to form the Faculty of Chemistry and Metallurgy. Recently in 2007, Mineral Processing Engineering Department established in the Faculty of Mines.

Since the establishment of the Faculty of Mines in 1953, several numbers of Deans administered the Faculty of Mines. The Dean is appointed for three years period from the list of the three candidates and the list is recommended by the President of İTÜ and also by YÖK.

Deans of the Faculty of Mines (1953-2010)		
	Prof.	Departments
1953 - 1955	Malik SAYAR	GE
1955 - 1956	İlhami CİVAOĞLU	Chemical
1956 - 1958	Salih Murat UZDİLEK	
1958 - 1960	Nusret KÜRKÇÜOĞLU	Physics
1960 - 1962	Ekrem GÖKSU	PNGE
1962 - 1964	Galib SAĞIROĞLU	GE
1964 - 1966	Kazım ERGİN	GFE
1966 - 1967	İhsan KETİN	GE
1967 - 1968	Kemal ERGUVANLI	GE
1968 - 1970	Veli AYTEKİN	Metallurgical
1970 - 1971	Ali SÜMER	ME
1971 - 1974	İhsan KETİN	GE
1974 - 1975	Nezihi CANITEZ	GFE
1977 - 1980	Senai SALTOĞLU	ME
1980 - 1982	Aytin GÖKTEKİN	PNGE
1982 - 1991	Erdoğan YÜZER	GE
1991 - 1997	Şinasi ESKİKAYA	ME
1997 - 2000	Naci GÖRÜR	GE
2000 - 2002	Yücel YILMAZ	GE
2002 - 2008	Mahir VARDAR	GE
2008 - present	İlyas ÇAĞLAR	GFE

ME: Mining, GE: Geological, PNGE: Petroleum and Natural Gas, GFE: Geophysical Engineering

The programs were revised in 1969 to transform from the five-year "Diplom-Ingeniuer" to a four-year B.Sc. degree and a two-year M.Sc. degree programs. New legislature passed in 1981 brought yet another revision to the academic organization of the İTÜ as well as other universities in Turkey. Between 1953 and 1960 the Faculty of Mines bestowed their graduates only with a M.Sc. diploma in Mining Engineering. Until 1973, all the departments at İTÜ the engineers were graduated with a M.Sc. degree. The time-length of engineering education reduced from the five years to four years in 1973 leading to a Bachelor of Science degree. The University went through structural changes in 1987 a compulsory English education was accepted by the Senate of the University. Students take one-year English Preparation Program and 30% of all the courses are accepted to be given in English.

Today, the Faculty of Mines with five (**Mining, Geological, Petroleum and Natural Gas, Geophysical and Mineral Processing Engineering**) departments that offer four-year programs leading to the degree of Bachelor of Science is graduating young and proficient engineers to search, develop and produce underground sources of Turkey.

EDUCATIONAL UNIT

Mission of the Faculty of Mines:

The mission of the Faculty of Mines is to foster a creative learning environment that will:

- prepare engineering students to support the needs of industry; the nation and the world by educating high quality graduates,
- conducting research, and developing new technologies related to earth science and engineering applications through five engineering programs that will improve tomorrow's economy and environment.

ADMINISTRATION

Administrative Head of Faculty of Mines, since 2008:

Prof. H. Ilyas Çağlar, *Dean*

Dean's Office

e-mail: caglar@itu.edu.tr

Phone: +90(212)285-60 60

Prof. Fahri Esenli, *Vice Dean*

e-mail: esenli@itu.edu.tr

Phone: +90(212)285-6063

Prof. Cengiz Kuzu, *Vice Dean*

e-mail: kuzu@itu.edu.tr

Phone: +90(212)285-6070

Organizational Structure

Organizational charts illustrating the governance of the University from Board and Senate to the Faculties and Institutes (Figure 1). The Departmental level structure within the Faculty of Mines is given in Figure 2.

Departments and Academic and Administrative Personnel

The Faculty of Mines accounts for approximately 8-10 percent of the total university enrollment on the main campus. Organization charts showing the position of the Faculty of Mines within the institution are shown in Figure 1.

There are five engineering departments in the Faculty of Mines: *Mining Engineering Department, Geological Engineering Department, Geophysical Engineering Department, Petroleum and Natural Gas Engineering, Mineral Processing Engineering Department*. The Department Head and Dean have administrative oversight to ensure that the engineering programs are in compliance with the University mission statements. The Department Head is the chief administrator of all resources provided to the Department. Department heads serve at the pleasure of their Dean. Periodically, input on performance will be solicited from faculty and staff; however, it is the Dean who will make the final decision about continued service in this role.

1. Department of Mining Engineering (DME)

Prof. Orhan KURAL, *Chair*

Assist.Prof. Hakan TUNÇDEMİR, *Deputy*

Mining engineering prepares students mine and tunnel mechanization, tunnel boring, drilling, cuttability and diggability of the rock formations, design and feasibility studies of underground and opencast mines, subway tunnels and stations, geostatistical reserve estimation, ore body modeling, cement technology, crushing, grinding and sizing technologies in mineral processing.

2. Department of Geological Engineering (DGE)

Prof. Remzi KARAGÜZEL, *Chair*

Prof. Serdar AKYÜZ and Assoc.Prof. Tolga YALÇIN, *Deputies*

Geological engineering addresses geological processes, physical properties and behaviors of the minerals and rocks, experimental rock mechanics, water research and hydrogeology, engineering and urban geology, ore deposits and industrial raw materials, geochemistry of rocks, environmental problems in geology, gemstones, disasters and geohazards, active

tectonics and earthquake risk analysis, paleoceanographic and paleoclimate researches, provenance and regional tectonic studies of Turkey.

3. Department of Petroleum and Natural Gas Engineering (DPNGE)

Prof. Mustafa ONUR, *Chair*

Assist.Prof. Hülya SARAK and Assist.Prof. Ömer İnanç TÜREYEN, *Deputies*

The major areas of research cover all fields of petroleum and natural gas engineering such as reservoir, drilling, production, as well as geothermal engineering: nonlinear regression analysis for pressure transient and well-log data, production from naturally fractured reservoirs, enhanced oil recovery, test analysis for gas wells, pipeline transportation of oil, natural gas and water, characterization of oil and geothermal Fields.

4. Department of Geophysical Engineering (DGFE)

Prof. Emin DEMİRBAĞ, *Chair*

Assoc.Prof. Hülya KURT and Assoc.Prof. Turgay İŞSEVEN, *Deputies*

Geophysical Engineering concentrates on the geophysical investigations for archeology, geophysical studies in coastal plains affected by saline water intrusion, environmental impact assessment and audit, geophysical investigations for identifying and assessing groundwater pollution, regional groundwater evaluation and development of regional flow models, karsts studies for groundwater development and geohazards, engineering risk assessments and risk mitigation.

5. Department of Mineral Processing Engineering (DMPE)

Prof. Fatma ARSLAN, *Chair*

Prof. Ayhan SİRKECİ, Prof. Mehmet Sabri ÇELİK *Deputies*

Mineral Processing Engineering deals with the areas of the physical and chemical processing of ores, flotation and flocculation, coal preparation and coal utilization technologies, liquid-solid separation and treatment of mine waste water, simulation and design of mineral processing plants, remediation and recovery of mineral processing tailings, processing of industrial raw materials.

Five engineering departments have faculty members who teach classes in engineering education and conduct research. Table D-1 and Table D-2 at the end of the section describe the programs offered by the departments, degrees awarded, and transcript designations.

In the Faculty of Mines, currently, 40 professors, 19 associated professors, 15 assistant professors, 34 research assistants are working in five engineering departments (Figures 3-5). Additionally, there are 7 lecturers, and 2 qualified engineers. At the Faculty of Mines 21 staffs are working at the general administration branch, and 16 staffs at the assisting supporting branch. The number of personnel, both full-time and part-time, for the İTÜ and Faculty of Mines are presented in Table D-4.

Faculty members serve on ad hoc committees. Each standing committee is assigned staff support, however, departmental committees fully run by faculty members.

Committees in the Faculty of Mines	<i>Members (Departments)</i>
FACULTY ADMINISTRATIVE BOARD <u>Prof. H. İlyas Çağlar</u> (Dean and Coordinator)	Prof. Orhan KURAL (DME) Prof. Mustafa ONUR (DPNGE) Prof. Remzi KARAGÜZEL (DGE) Prof. Emin DEMİRBAĞ (DGFE) Prof. Fatma ARSLAN (DMPE) Prof. Neşet ACARKAN (DME) Prof. Abdurrahman SATMAN (DPNGE) Prof. Yüksel ÖRGÜN (DGE) Assoc.Prof. İsmail UĞUR (DME) Assoc.Prof. Hülya KURT (DGFE) Assist.Prof. Ömer İnanç TÜREYEN (DPNGE)
FACULTY BOARD Academic <u>Prof. H. İlyas ÇAĞLAR</u> (Dean and Coordinator)	Prof. Mustafa ONUR (DPNGE) Prof. Hayrünnisa DİNÇER ATEŞOK (DMPE) Prof. Ş. Can GENÇ (DGE) Assoc.Prof. Hanifi ÇOPUR (DME) Assoc.Prof. Hülya KURT (DGF) Assist. Prof. Murat BUDAKOĞLU (DGFE)
Strategic Planning <u>Prof. H. İlyas ÇAĞLAR</u> (Dean and Coordinator)	Prof. Orhan KURAL (DME) Prof. Remzi KARAGÜZEL (DGE) Prof. Mustafa ONUR (DPNGE) Prof. Emin DEMİRBAĞ (DGFE) Prof. Fatma ARSLAN Ali IŞIK (Faculty Secretary)
Academic Evaluation and Promotion	Prof. Fuat YAVUZ (DGE) Prof. Cengiz KUZU (DME)

<u>Prof. Abdurrahman SATMAN</u> , Coordinator (DPNGE)	Prof. Gülçin ÖZÜRLAN AĞAÇGÖZLÜ (DGF) Prof. Ayhan Ali SİRKECİ (DMPE)
ABET Accreditation <u>Prof. H. İlyas ÇAĞLAR</u> (Dean and Coordinator) Prof. Fahri ESENLİ (Vice Dean) Prof. Cengiz KUZU (Vice Dean)	Assoc.Prof. Nilgün OKAY (Faculty Assistance Coordinator) (DGE) Prof. Ayhan Ali SİRKECİ (DMPE) Prof. Selamet G. ERÇELEBİ (DME) Assist.Prof. Gürşat ALTUN (DMPE) Assoc.Prof. Hülya KURT (DGF)
Education-Instruction <u>Prof. Fahri ESENLİ</u> (Vice Dean and Coordinator)	Assoc.Prof. Hanifi ÇOPUR (DME) Prof. Serdar AKYÜZ (DGE) Prof. Ali Ayhan SİRKECİ (DMPE) Assist.Prof. Ömer İnanç TÜREYEN (DPNGE) Assoc.Prof. Hülya KURT (DGF)
Adaptation <u>Prof. Ayhan SİRKECİ</u> (Coordinator)(DMPE)	Assoc.Prof. İsmail UĞUR (DME) Assist.Prof. Vural YAVUZ (DGE) Assist.Prof. Metin MIHÇAKAN (DPNGE) Assoc.Prof. Hülya KURT (DGFE)
Double Major <u>Prof. Fahri ESENLİ</u> (Vice Dean and Faculty Double Major Advisor)	Prof. Erkin NASUF (DME) Assist.Prof. Şenol YAMANLAR (DPNGE) Assoc.Prof. Zekiye KARACIK (DGE) Assist.Prof. Neslihan GÖKAŞAN (DGFE) Assoc.Prof. Gülay BULUT (DMPE)
Erasmus Program <u>Prof. Fahri ESENLİ</u> (Vice Dean and Coordinator)	Prof. Hasan ERGİN (DME) Assoc.Prof. Nilgün OKAY (DGE) Assist.Prof. Şenol YAMANLAR (DPNGE) Assoc.Prof. Ayşe KAŞLILAR ŞİŞMAN (DGFE) Assoc.Prof. Alim GÜL (DMPE)
Industrial Experience <u>Assoc.Prof. Ekrem YÜCE</u> (Coordinator)	Assoc.Prof. Cemal BALCI (DME) Assist.Prof. Murat BUDAKOĞLU (DGE) Assist.Prof. Hülya SARAĞ (DPNGE) Assist.Prof. Caner İMREN (DGFE)
Financial Aid <u>Assoc.Prof. Alim GÜL</u> (Coordinator)	Assist.Prof. Ömür Acaroğlu ERGÜN (DME) Assist.Prof. Ziyadin ÇAKIR (DGE) Assist.Prof. Hülya SARAĞ (DPNGE) Assist.Prof. Gonca ÖRGÜLÜ (DGFE)
Scientific and Social Activities <u>Prof. H. İlyas ÇAĞLAR</u> (Dean and Coordinator)	Dr. Erhan BOZKURTOĞLU (DGE) Assist. Zeynep AKTUNA (DGE) Assist. Yıldray PALABIYIK (DPNGE) Assist. Kemal Mert ÖNAL (DGFE) Assist. Onur GÜVEN (DMPE)
Housing <u>Prof. Cengiz KUZU</u> (Vice Dean and Coordinator)	Prof. Selamet G. ERÇELEBİ (DME) Prof. Ercan ÖZCAN (DGE) Assist.Prof. Metin MIHÇAKAN (DPNGE)

Sport <u>Prof. Cengiz KUZU</u> (Vice Dean, Coordinator)	Prof. Aysun GÜNEY (DGFE) Prof. Neşet ACARKAN (DMPE) Assoc.Prof. Alim GÜL (DMPE) Dr. Rahmi EYÜBOĞLU (DGE) Dr. Erkan BOZKURTOĞLU (DGE) Assist.Prof. Caner İMREN (DGFE)
Student Clubs <u>Assist.Prof. Hakan TUNÇDEMİR (DME)</u>	Assoc.Prof. Tolga YALÇIN (DGE) Assist.Prof. İnanç TÜREYEN (DPNGE) Assoc.Prof. Argun KOCAOĞLU (DGFE) Assoc.Prof. Ekrem YÜCE (DMPE)
Publicity <u>Prof. Cengiz KUZU</u> (Vice Dean, Coordinator)	Assist.Prof. Ömür ACAROĞLU ERGÜN (DME) Assist.Prof. Nurgül ÇELİK BALCI (DGE) Assist.Prof. Ömer İnanç TÜREYEN (DPNGE) Assist.Prof. Turgay İŞSEVEN (DGFE)
Mineral Museum <u>Dr. Halis MANAV</u> (Coordinator)	Dr. Vildan ESENLİ Res.Assist. Ümmühan SANCAR Res.Assist. Didem MARAL Res.Assist. Bala EKİNCİ
Emergency <u>Prof. Hasan ERGİN (DME)</u>	Assoc.Prof. Nilgün OKAY (İTÜ Disaster Management Center) Assist.Prof. Metin MIHÇAKAN (DPNGE)

Programs Offered and Degrees Granted

The five engineering departments in the Faculty of Mines which teach engineering subjects, conduct engineering research. Granted bachelor's degrees are:

Bachelor of Science in Mining Engineering

Bachelor of Science in Geological Engineering

Bachelor of Science in Petroleum and Natural Gas Engineering

Bachelor of Science in Geophysical Engineering

Bachelor of Science in Mineral Processing Engineering

Each engineering department offers Master of Science and the Doctor of Philosophy degrees through the Institute of Science and Technology (İTÜ Graduate School).

CONTINUOUS IMPROVEMENT ACTIVITIES

AT THE FACULTY OF MINES

Regional or Institutional Accreditation

İTÜ has been reorganizing its system in order to apply for international accreditation. Four departments were redesigned for the purpose of ABET EC 2000 accreditation. Departments were found successful in this exercise. Geophysical Engineering, Mining Engineering programs were evaluated by ABET in 2004 and given substantial equivalency; later Geological Engineering, Petroleum and Natural Gas Engineering programs were given substantial equivalency by ABET in 2005.

Recently, a national accreditation system for Turkish Universities is established for national accreditation procedure for engineering education in Turkey. Since 2007 the quality of engineering programs had been assessed by the Engineering Education Evaluation Council (MUDEK). İTÜ is the one of the leading university who has an important role in establishing the system and also serving in MUDEK.

The current administration began its term in August 2008, and the following is a summary of the major projects undertaken in continuous improvement in education at the Faculty of Mines.

Major structural improvements in the Building in last five years:

- Entrances to the building were renovated
- Conference halls and meeting rooms were renovated.
- Classrooms are reconstructed and furnished
- Hallways were furnished
- Gabronite Café is opened.
- Offices for Student Clubs
- 10 restrooms were fully renovated

- Safer drinking water system (filtration and purification) was established.
- Xerox-Center was renovated.
- A room was provided to use for a first aid and in an emergency.
- Furnitures in hallways
- Additional elevator and special escalator for disabled students and visitors were built
- Room for retired Faculty and Alumni Office
- Sait Adalı Ceramic Room was opened to have art and social activities
- Classic Guitar Room provide music courses and special events

ABET Activities in the Faculty

Several committees and staff work to ensure that the education and administration are being met. The ABET Coordination Office is founded to provide coordination, communication and cooperation between four engineering programs during the preparation for the ABET evaluation process. A faculty member assigned as Faculty Coordinator, to assist to Dean's Office.

ABET coordination meetings with commissions were held by the Dean. Commissions in the Faculty of Mines are listed in page 10.

Faculty members were fully participated ABET Workshops and Meetings on ABET activities in İTÜ. Numbers of University meetings were organized during the past academic year. ABET Workshop was held in October 2009 for academic and administrative personnel and departmental ABET representatives at İTÜ.

Safety in the Faculty of Mines

ABET Laboratory Commission is established in October 2009 under the coordination of the Faculty of Mines to organize laboratory safety regulation procedures. Members of the Commission (representatives from each department) met four times during the academic year to carry out the organization and coordination activities.

1. School safety and emergency planning procedures are obtained by the *Emergency Management Team*. Two FEMA certificated faculty members (Mehmet Karaca, *Vice Rector* and Nilgün Okay, *ABET Faculty Coordinator*) are member of İTÜ Disaster Management Center (CEDM*).
2. *Safety Training* seminars for faculty and students will be starting in the Fall 2010.
3. New safety signs and emergency contact information have been installed in each lab.
4. A telephone has been installed so that it is available to shop users in case of an emergency.

LABORATUAR GÜVENLİĞİ

DEKANLIĞIN koordinasyonunda Ekim_2009'da başlatılan süreçte gerçekleştirilen çeşitli toplantılar ve yapılan titiz çalışmalar sonunda Fakültemizin her bir Laboratuvarının özelliklerine bağlı olarak Uluslararası normlarda hazırlanan yaklaşık 50 adet "**Laboratuvar Güvenliği Bilgi Panoları**" ABET ziyareti öncesinde ait oldukları konumlara yerleştirildi. Mayıs 2010.



"Laboratuvar Güvenliği" Çalışma Ekibi (Teşekkür Ederiz)

Yrd. Doç. Dr. Metin Mıhçıkan (Koordinatör)-Doç. Dr. Tolga Yalçın-Yrd. Doç. Dr. Nurgül Çelik Balcı-Doç. Dr. Nilgün Okay-Yrd. Doç. Dr. Cemal Balcı-Yrd. Doç. Dr. Hülya Sarak-Yrd. Doç. Dr. Turgay İşseven- Dr. Tahsin Perek

Based on the survey studies and documentation, a special “*Laboratory Safety*” forms are prepared and posted outside more than 40 laboratories in the Building. The safety level of all chemicals, physical and other materials, which we may get close encounter depending on technical properties in each laboratory, are marked in the information boards. In case of emergency, fire-related disaster conditions, the selection of fire fighting methods can be decided depending on the effectiveness of the hazardous (flammable, explosive, irritable, radioactive) materials (HAZMAT).

In addition, emergency telephone numbers of responsible people are also provided on the safety sheets. These efforts probably will aid to fight against in case of emergency and fire danger in the laboratories within the Faculty building.

***İTÜ The Center of Excellence for Disaster Management (CEDM)** is able to train professionally emergency managers, organize educational seminars on national and international levels in order to increase the general population's understanding of the need for earthquake planning and preparedness and coordinate research projects, also carries out a graduate-level education program, for professionals who are seeking a Masters Degree in Disaster Management (<http://www.aym.itu.edu.tr>).

New Summer Student Training regulations

Students must complete the 60 work-day industry trainings beginning from sophomore year during the summer terms as a part of B.Sc. Degree requirement. Training Commission is established by five faculty members, one from each department, and they evaluate and organize available industry training opportunities in both private and government companies.

When the students completed their trainings, employers must fill out a standard form to show his/her success level during training period and this form must be mailed directly to the *Departmental Industry Training Commission*. Distribution of the students who made summer trainings in different industries is listed at Table D-5.4.

Student trainings are carried out according the policies decided by the *Faculty Executive Board*. Students are insured by the İTÜ against to unexpected job accidents during the training period. This is mandatory job insurance by law, in addition to student's health insurance which has been recently provided by the University.

YER (EARTH) STUDENT SYMPOSIUMS

Earth Sciences Engineering Projects Symposium and Student Graduation Projects Exhibition

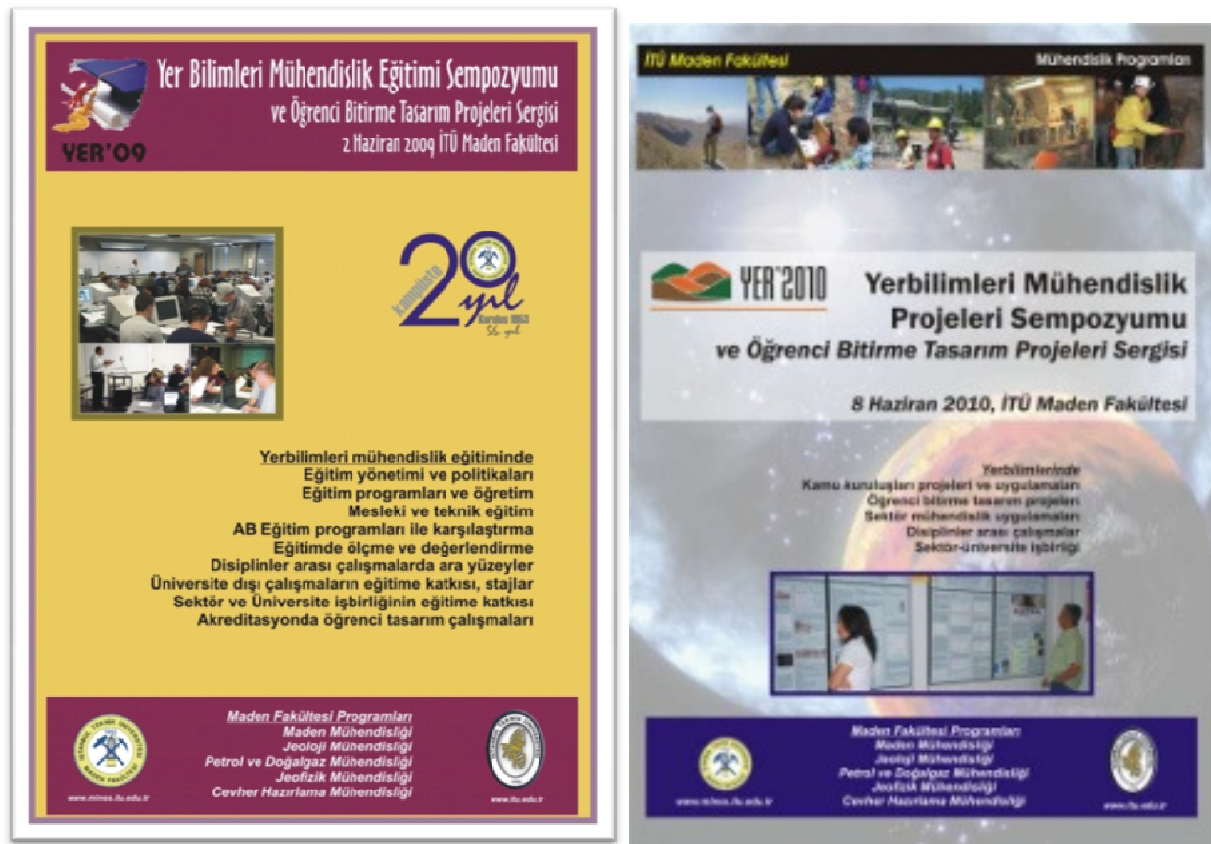


YER Student Symposiums have been organized by the Dean's Office. This event is excellent opportunity for our undergraduate students to present their graduation design projects in the poster format. These poster presentations are evaluated by the Advisory Committees and distinguished representatives from the industry. YER outlines public sector projects and their applications in Turkey, graduating students' design projects, engineering applications in the sector, inter-disciplinary studies, and industry and university cooperation.



YER Student Symposium is given important feed-back for our programs to configure how well our research interests and industry's demands coincide and to improve the quality of engineering

education in İTÜ. These events also give chance to do surveys, and to get information from the constituents of our programs (Advisory Committees, Alumni, Students) for accreditation preparation. In YER'2009 ten technical papers were presented from five engineering programs. This year the 57th Anniversary of the Faculty was celebrated in YER'2010 twentyseven graduation projects are presented by the senior students. Distinguished talks are also given during the Symposium by the departmental advisory committee members and alumni.



Other conferences, lectures, seminars in İhsan Ketin Hall

A conference was organized by Faculty of Mines Dean's Office on "Essence Inside Us" in November 24, 2009. Prof. Üstün Dökmen (a specialist in psychological consulting and guidance) emphasized issues such as "loving your profession", "quality of communications in

business", *"expressing and understanding himself/herself better"*, and *"personal development"*. Students, faculty and personnel were participated this event.

İTÜ Alumni Day, Faculty Day, Graduation Day, Ihsan Ketin, Aykut Barka, Kemal Erguvanlı Anniversary Days are held by the Dean's Office. Other selected scientific activities and various meetings were organized during last two years (Figure 6):

- Petroleum Seminar is organized every year in June by the Department of Petroleum and Natural Gas Engineering (2 day event)
- Magnetotelluric and Geophysics Workshop (2 day)
- 10th Anniversary of the İzmit Earthquake (2 day)
- YER'09 Earth Sciences and Engineering Symposium in June 2nd, 2009 (1 day)
- YER'10 Earth Sciences and Engineering Projects Symposium in June 8th, 2010 (1 day).

Faculty Day celebrations



STUDENTS

Student Body

Currently 66.8 % of enrolled 22,000 students at İTÜ are male and 33.2 % are female. In the Faculty of Mines 26% of students are female students (Table D-5 and Figure 8). Student body is composed of 97 % Turkish and 3 % international students in İTÜ.

Each year the number of students are accepted to the five (**Mining, Geological, Petroleum and Natural Gas, Geophysical and Mineral Processing Engineering**) departments of the Faculty of Mines: about 50 in Mining Engineering, 40 in Geological Engineering, 30 Petroleum and Natural Gas Engineering and 30 in Geophysical Engineering. In the Faculty of Mines 4% of students are international students (Figure 8). Due to recent increases in the enrollment numbers of international students in Department of Petroleum and Natural Gas Engineering, there is a significant increase in the international student graduates. The numbers of graduation of students are relatively stable in other departments. The numbers of graduated students from engineering programs for the last four years are shown below as diagrams (Figure 9). Each year approximately 120 students graduate from the departments of Faculty of Mines.



Credit Unit

One credit-hour represents one class hour or two laboratory (or recitation) hours per week. An academic year has two regular semesters and a summer school. An academic semester has 14

weeks of classes, excluding final examinations. Summer school is seven weeks long and a summer course has twice as many class hours per week as a regular term course. A course taught in summer school has the same credits hours as that of a regular term.

The admission, registration, assessment and advising process has been centrally automated by The Banner Student software program (SunGuard Higher Education of the USA) (<http://www.sis.itu.edu.tr/ogrenci.html>). Qualified students who succeed in the Istanbul Technical University's "English Proficiency Examination" (minimum score is 60, or who have a score of 79 or 213 in computer-based TOEFL) are directly admitted to the freshman class. Admitted students who are not fluent in English are accepted to the English Language School of İTÜ and are given a one-year of intensive program in English. Details of the overall student enrollments according to gender are presented in Table D-5.

Foreign Student Placement Examination (YÖS), which is operated by YÖK, is held annually for placing students who are not Turkish Citizens.

Increase in support for International Student Exchange: İTÜ students are encouraged to spend one or two semesters abroad at partner Universities. The number of students awarded grants for exchange from ERASMUS – European exchange – to attend European Universities is the leading number in Turkey in engineering. Exchange students (Erasmus program and others) are treated as special students (Table D-5.2).

Students who are enrolled in other universities and planned to "**transfer**" to İTÜ degree programs should be in good academic and disciplinary standing (minimum cumulative grade point average of 2.5 on a 4.0 scale). The majority of the transfers are realized at the sophomore year. Each department sets the quota and the transfer requirements, subject to approval of *Faculty Executive Board* and University Executive Board. Table I-2 shows the history of transfer student statistics.

Students with a GPA of 3.00 or above can follow "**double-major**" programs in departments within İTÜ with the consent of both departments. This program enables them to graduate with two undergraduate degrees: Mining engineering with Geological engineering, Petroleum NG engineering and Mineral Processing engineering; Geological engineering with Geophysical

engineering, Metallurgical engineering, Molecular Biology engineering, Civil engineering, Geomatic engineering; Geophysical engineering with Petroleum NG engineering and Geomatic engineering.

İTÜ two general functions of student advising: (1) academic advising relating to course selection and sequencing with Academic Advisors (conducted by Faculty members), and (2) graduation project mentoring (conducted by faculty). Both of these functions are coordinated at İTÜ via the Faculty of Mines and program level. When a student is accepted into the program, he/she is randomly and evenly assigned to a faculty member who will serve as his/her mentor.

Conferral of a B.Sc. degree requires completion of the 4-year curriculum defined by each department. Students are required to complete at least two separate student summer trainings as directed by their departments ([Table D-5.4](#)). A student having a minimum CGPA 2.00 and completed 18 credit hours in a semester with a GPA for the semester of 3.00-3.49 and 3.50-4.00 is placed in the “*honor and high honor lists*” respectively. A graduation project is required for all degree programs. Students, who have completed the program, fulfilled the internship and 30% English requirements become eligible for a bachelors degree diploma provided that their CGPA is not less than 2.00.

FACILITIES OF THE FACULTY OF MINES

The Faculty of Mines with five departments including Institute of Eurasian Earth Sciences occupies three large complex buildings with a combined floor space of about 17,000 m². This space includes new Mineral Processing Annex that became operational after 2007 for research facilities and office uses.

The Building complex contains a large auditorium and 2 conference rooms, 2 workshop rooms and 12 classrooms. The total capacity of the all classrooms is 1400 students. Each classroom is equipped with data projectors. There are 10 laboratories with a 200 student's capacity, and 2 computer rooms with a 70 student's capacity. As supporting units, 6 working rooms such as offset, carpenter, plumber, thin-section and stone-cutting units are provided in the Faculty. There is a conference hall with a 130 person capacity, and the corridor museum which contains rich mineral samples.

Offices:

The primary Dean's Office space is located on first floor in the A-Building in an enclosed suite. There are two Vice Dean offices and Faculty Secretary suite, six staff offices, Administrative meeting-work room, and ABET office. Reception desk is located at the entrance of B-Building.

The layout of the space also facilitates easy access to faculty members by the students. Teaching assistants are typically graduate students who have been mostly provided excellent office space. There are some separate partitioned work spaces available for TA's with wireless internet access and high speed internet connections. The critical need will be to provide adequate office and research space for the new faculty.

Classrooms:

Classrooms are renovated and quite adequate for present and foreseeable future needs. Information boards are tagged to each door for and announcements. Recently two-double auditoriums for classes are fully reconstructed. All classrooms are equipped with overhead and data-show projectors, wireless internet access and high speed internet connections. Scheduling of classrooms in these buildings is the responsibility of İTÜ, with requests being initiated at the department level.

List of the capacities of Classrooms/Lecture Rooms in the Faculty of Mines					
Locations	Classroom	Capacity for lecture	Capacity for exam	Data Projector	AC
B-Block					
1 st floor	A101	114	46	x	x
	A102	114	46	x	x
	A103	121	55	x	
	A105	120	48	x	
	MP Seminar Room	25	20	x	x
2 nd floor	A201	120	48	x	x
	A202	120	48	x	
	A203	90	36	x	
	A204	108	45	x	
	A205	90	36	x	
	B204	90	36	x	x
	B205	120	48	x	x
	B206	90	36	x	x
	Galib Sağroğlu Room	25	15	x	x
	PNG Lecture Room	30	20	x	x
3 rd floor	A301	70	40	x	
	A302	70	40	x	
	EMCOL Meeting Room	25	15	x	x
A-Block					
1 st floor	B208 Lecture Room	70		x	x
	B207 Computer Lab	48		x	x
2 nd floor	B315 Computer Lab	56		x	x
lower level	Ihsan Ketin Hall	130		x	x
	Kemal Erguvanlı Room	30	25	x	x
	D106-Seminar Room of Geophysics	30	15	x	x
	Eurasia Lecture Room	25	20	x	x
Total Capacity	14 Classroom + 8 Lecture Room	1650	735	25	17

Departmental Seminar/ Lecture Rooms

All seminar/lecture rooms are exclusively equipped and installed data show-projectors and smart, interactive whiteboards. Departmental seminar rooms, Kemal Erguvanli Seminar Room, Galib Sağıroğlu Seminar Room, Petroleum Engineering Seminar Rooms, Geophysical Engineering Seminar Room, EMCOL and Eurasia Lecture Rooms are used for both lectures and seminars. Their capacities are listed on the table above.

Departmental Library Rooms

There are several library rooms open to student access in the Faculty of Mines: *Kazım Ergin* Room in the Geophysical Engineering Department; and *Kemal Erguvanlı* Room and *İhsan Ketin* Room in the Geological Engineering Department. These are departmental libraries of special documentary.

Hamdi Bozbağ Study Hall:



Hamdi Bozbağ is located on the third floor of A-building. The hall was donated by the Bozbağ family. It provides a quiet place for students to study and designed for the student learning activities and opens between 09:00-17:00 hours from Monday to Friday. The library has some collection of class notes, text and some reference documents and books. There are two set of rock-exhibition holding lab sample examples for General Geology course.

Ihsan Ketin Conference Hall:



Ihsan Ketin Conference Hall is the central hall for seminars, graduation ceremonies and similar events in the Faculty. The auditorium accommodates up to 300 people. On the departmental basis there are also eight departmental seminar rooms in the building.

Faculty Computer Labs

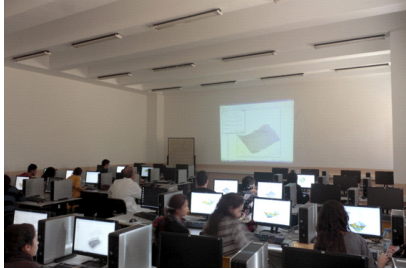
Mrs. Meliha YAZICI, *Geophys. Eng., M.Sc.*, Lab Manager

The Faculty of Mines's primary undergraduate computing facilities are located on the first and second floor of the A-Building and contains over 100 computers, each with high speed Internet access. Wireless internet access is free in the building for users.

Capacities of Computer Labs in the Faculty of Mines

B207- Computer Lab 1						
<i>Piece</i>	<i>Type</i>	<i>Brand</i>	<i>Processor/ Software</i>	<i>Memory</i>	<i>Hard Drive Capacity</i>	<i>Peripherals</i>
48	Desktop	OEM	Intel Pentium Core2Duo @2.00 GHz Windows XP and Linux (Office2007, Autocad 2007, Golden)	1 GB	130 GB	17'' LCD Monitor, 256 MB ATI Display Adapter
B15- Computer Lab 2						
56	Desktop	OEM	Intel Pentium 4 @2.00 GHz	1 GB	130 GB	15'' LCD Monitor, 256 MB ATI Display Adapter

Computer Lab 1:



It is a large space of 127 m² that effectively accommodates the regular classes. Classroom that are equipped with modern teaching tools which are serviced by the İTÜ Network & Computing Services. The Lab is used for the courses, such as “*Introduction to Computing and Information Systems*” (BIL101E), “*Intro to Science and Engineering Computing*” (BIL104E, BIL108E), “*Autocad for Geologists*”, “*Computer Applications in Geology*”, “*Data Processing*” and some graduate courses. All users have shell access to Linux terminal servers. Numerous software packages are available to the users. A partial list of campus-wide licensed programs such as Microsoft products, including MacAffee, AutoCAD, ANSYS, SPSS, MatLab.

Computer Lab 2:



The computer lab is located on second floor of A-Building (Room B315) and open to accommodate student schedules between hours of 9:00-17:30. It is a large room (160 m²) and There are 56 workstations (P4 CPU 3.2 GHz. 504.Mb RAM), 1 laser printer (black-white), 2 scanner. All students have accounts to gain access to computers located in the laboratories and

the entire İTÜ Information System. All students have personal e-mail accounts and are able to publish their own web pages.

Instructional and Research Laboratories

There are sufficient numbers of laboratories available to effort for the educational, students and research needs of the departments. Some of them are used for instruction related to the undergraduate program and others used for graduate research and industry projects. These laboratories have been modernized in 2009 under the support of several İTÜ, TÜBİTAK and DPT, including EU 6th and 7th Frame infrastructure projects. The laboratories are following:



Mining Engineering: Excavation Technology and Mining Machinery Lab, Micro-Tunnel Boring and Drilling Techniques Lab, Sample Preparation and Rock Cutting Lab, Rock Mechanics and Natural Building Stone Lab, Aggregates Lab, Mine Ventilation and Safety Lab, Computer Aided Mining Planning Lab.

Mineral Processing Engineering: Pilot Plant, Surface Chemistry Lab, Flotation Lab, Magnetic Separation Lab, Solution Chemistry Lab, Coal Technology Lab, Vecihi Gürkan Sample Preparation Lab, Particle Mechanics Lab, Chemical Analysis Lab, Rheology Laboratory, Clay Characterization Lab. Process Mineralogy Laboratory, Paint Technology Lab, Particle Mechanics Laboratory, Precious Metals Laboratory

Geological Engineering: Optical Mineralogy Lab, General Geology Rock Samples Lab, Rock Mechanics Lab, GIS Lab, Gemology Lab, Ore Deposits Lab, Paleontology Lab, X-ray Lab.

Petroleum and Natural Gas Engineering: Drilling Fluids Lab, Rock and Fluid Properties Lab, Enhanced Oil Recovery Lab, Formation Water Analysis Lab, Reservoir Simulation Lab.



Geophysical Engineering: Applied Geophysics Lab, Seismology Lab, Nezihi Canitez Data Processing Lab, Paleomagnetism Lab.



Thin-section Laboratory: The Dean's Office supports "thin section and rock cutting" laboratory, providing one technician and all undergraduate and graduate students can get benefit for all kinds of projects. By this way, the students can have much better quality education and also, they can prepare their own thin sections for the petrography studies as a part of their Graduation projects. The facility serves mostly to Departments of Geological and Mineral Processing Engineering.

Almost all laboratories are renovated to serve more students under the support of infrastructure research grant available from State Planning Organization (DPT) and İTÜ Research Funds. The following laboratories renovated in terms of both physical appearance and purchasing new instruments during 2009 – 2010: (1) Thin Section, Rock Cutting and Polishing Lab, (2) Sample Preparation Lab, (3) X-Ray Diffraction and X-Ray Fluorescence Lab, (4) Sample Crushing and Grinding Lab, (5) Biogeochemistry Lab, (6) Geochemical Analyses Lab, (7) Clean Room, (8) LA-ICP-MS Lab and (9) Geomicrobiology Lab.

EMCOL Laboratories: Eastern Mediterranean Center for Oceanography and Limnology (EMCOL) Research Laboratory (<http://www.emcol.itu.edu.tr>) was established for core analysis studies during 2005 – 2008 periods both under the financial aid of EU and the Faculty of Mines. EMCOL has the following laboratories: (1) Core Analysis Laboratory, (2) Sedimentology Laboratory, (3) Geochemistry Laboratory, (4) Wet Core Laboratory, (5) Core Repository, (7) Meeting room.

MIL Laboratories: MIL (Mining Specialization Laboratory; <http://www.mil.itu.edu.tr>) is established in the Faculty of Mines to conduct both advanced scientific research and mining industry projects. Mining industry needs reliable and internationally certified geochemical analyses laboratory for industrial application. MIL has the following laboratories: (1) Geochemistry Laboratory, (2) Rock Crushing and Grinding Laboratory, (3) Sample Preparation Laboratory, (4) X-Ray Diffraction and Clay Mineralogy Laboratory, (5) Geochemical Instrumental Laboratory (AA, ICP-MS and XRF), (6) Ore Microscopy and Fluid Inclusion Laboratory.

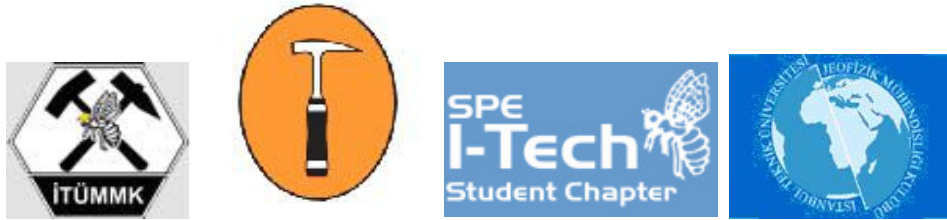
Sample Preparation and Mineral Analysis Laboratories: Institute of Eurasian Earth Sciences Laboratories (Sample Preparation, Crushing-Grinding, Separation, Analysis and Microscopy) is available for Senior and graduate students and faculty research.

Corridor Museum: Mineral and Rock Collection:

Corridor Museum is an open small scale collection of various minerals, rocks, gemstones and fossils which is founded and donated by faculty members. It is exhibited along the hallways of the Faculty of Mines. The museum is located at A and B corridors to have a better accessibility for students and visitors. The museum includes many excellent minerals, rock and fossil samples collected. There are about 2000 samples in 57 cabinets. Each sample is labeled and documented for students.



Student' Clubs at the Faculty of Mines



Students in Faculty of Mines have opportunities to participate in student clubs to enhance their education and professionalism. The five active units available in the Faculty of Mines. Clubs are supported by Dean's Office. All Club Offices are located in the Cafeteria floor:



- Mining Engineering Club
- Geological Engineering Club
- Geophysical Engineering Club
- Petroleum Natural Gas Engineering Club and SPE I-Tech Student Chapter
- Mineral Processing Engineering Club

Summer Industrial Trainings and Career Planning

Industry training is vitally important concept in engineering education. Students get to know and take their summer trainings in governmental, public and private organizations/companies, including consulting engineering firms, mining companies, petroleum producers, hydrogeological consulting firms, environmental and water resources agencies. Students are encouraged meet employment in *government agencies* as well as private companies, such as MTA, TPAO, DSİ, Bank of Provinces, TKİ.



It is getting more difficult to find suitable training places in prestigious companies for the students. Besides, government companies and some other private companies with the personal contacts of faculty members can help student for their industrial trainings. Alumni also help undergraduate students to find places in related fields in private industries for the summer industrial trainings.

Union of Chambers of Turkish Engineers and Architects (TMMOB)

Graduates from approximately 70 different academic disciplines are member of chambers. Chambers related to earth sciences and mines are:

Chamber of Mining Engineers (since 1954): <http://www.maden.org.tr>

Chamber of Petroleum Engineers (since 1970): <http://www.pmo.org.tr/>

Chamber of Geological Engineers (since 1974): <http://www.jmo.org.tr/>

Chamber of Geophysical Engineers (since 1986): <http://www.jeofizik.org.tr/>

Government Agencies:

General Directorate of Electrical Power Resources Survey and Development (EIE): <http://www.eie.gov.tr>

General Directorate of Mineral Research and Exploration (MTA): <http://www.mta.gov.tr>

Turkish Petroleum Association (TPAO): <http://www.tpao.gov.tr>

General Directorate of State Hydraulic Works (DSİ): <http://www.dsi.gov.tr>

General Directorate of Disaster Affairs (AFET): <http://www.deprem.gov.tr>

General Directorate of Turkish Coals (TKİ): <http://www.taskomuru.gov.tr>

Environmental Protection Agency For Special Areas: <http://www.ockkb.gov.tr>



Gabronite Cafeteria



Students also spent most of their times in the Cafeteria area and hallways. The Cafeteria serves students, personnel and visitors in the lower level of the building. All events are organized inside and outside the Cafeteria area. Student Clubs and Copy-center is located near the food center in the Faculty of Mines.



Outside in the garden...

Faculty Lounge is also serving breakfast, lunch and dinner exclusively for personnel in the Faculty backyard. Personnel spent their time outside in summer time.

Savaş Çekirge Classic Guitar Education Center (<http://www.klasikgitar.itu.edu.tr>)



Savaş Çekirge Center started classic guitar education in 2004. Besides courses there are several recitals organized during the academic year. There is “İTÜ GİTAR”, a bulletin is periodically published about the classic guitar education and events.

The Faculty song can be listened at:

<http://www.mines.itu.edu.tr/Icerik.aspx?sid=5087>

Sait Adalı Ceramic Studio

İTÜ Faculty of Mines Sait Adalı Ceramic Studio was opened in 2004 to the art activities. Beginning ceramic and drawing, painting courses are provided for students and personnel. There are also annually organized exhibitions after the spring academic year.



SUPPORTING UNITS ON CAMPUS

İTÜ Library System (www.kutuphane.itu.edu.tr)

İTÜ Library system, with its automation and electronic services, is one of the leading libraries in Turkey. The services of İTÜ Library are available to the faculty members, the students and the administrative staff, as well as to users from other national and international research institutions. The library uses a fully integrated library automation system and connected to 111 electronic data base systems in the world. Most of the library services are available 24 hours via Internet. İTÜ has a central and seven branch libraries situated in different campuses, integrated with Millennium user-friendly library automation software. All users are informed about their orders, new services and their requests through electronic mail system and e-bulletin.

The Library receives over 2000 current periodicals and keeps major international abstracts and indexes to periodic literature. İTÜ Libraries have access more than 28.000 print and electronic journals, and also have subscription to e-books, thesis and dissertations and technical documents databases. An amount of 400 US\$ is annually allocated to each faculty member to order new books to enhance research and teaching activities. In addition, the total library annual fund to purchase books and periodicals is more than 2,000,000 US\$.

The Mustafa Inan Central Library at main campus marks the physical, academic, and intellectual center of İTÜ, providing an environment rich in resources and technology to on-campus and distance students and faculty. New library building which was constructed in 2007, holds a total of around 500.000 various materials in English, Turkish, and some other languages, which makes it one of the largest technical collections in the country. The Library is open 13 hours a day and seven days a week.

İTÜ Computer System (<http://www.itu.edu.tr>)

İTÜ Computer Center is a service unit, which provides computing facilities in support of research, education and administration. It is divided into three groups: System and Support Group, Network Management Group, Software Development Group. Its main task is to run a smoothly functioning campus network for 24 hours every day, providing access to computational services and to worldwide academic communications. With support from the Network Systems Programming and Operations units, İTÜ has a computer network that ties all of the campus computer facilities together and provides access to the world through the internet. The network includes wireless, dialup and Ethernet connections. The majority of campus buildings and outside areas have wireless access. Faculty and students can access İTÜ computational resources from their offices, classrooms, laboratories, dormitories, housing-apartments.

“Ninova at İTÜ” that was developed for the use of academic courses, now provides access to course resources via “public course model” for the non-İTÜ members. Ninova is a large-scale, web-based electronic learning platform. It is an electronic learning and teaching resource for educators and students. Ninova makes education very quick and easy. Faculty can support class room education through electronic messaging, publishing announcements, assignments, events and notes on Ninova (<http://www.ninova.itu.edu.tr>).

İTÜ Erasmus Center and Coordinators (<http://www.erasmus.itu.edu.tr>)

Erasmus is a program funded by European Union (EU), established to link universities in the member states of the European Union. It enables undergraduate and graduate students to study and work abroad, as well as university staff and academic staff to visit partner universities in order to promote broad institutional cooperation across Europe. The aim of the Erasmus Program is to increase the quality of the Higher Education in Europe, and strengthen the European Dimension in the Higher Education in Europe. Actually, Erasmus is mostly related with the "mobility of university students". Recently, the grant usage for student mobility is achieved and activities are increased at İTÜ, such as counselling for outgoing students and incoming students, regular meetings with ECTS departmental coordinators. The Erasmus Club by former Erasmus students were established.

Student Services at İTÜ

İTÜ provides services that enhance and support the university's academic mission and the quality of life of İTÜ students. Besides **Student Clubs** (<http://www.ksb.itu.edu.tr>), various public attention sport events, sauna, gymnasium, baseball dome, small football stadium with the capacity of 10,000, music concerts, art movie presentations, **İTÜ Festivals**, Olympic-type swimming pool and other social activities organize continuously inside the campus.

İTÜ Womens' Center (BMT KAUM) is recently established in 2009 and is committed to supporting women engineering student and faculty to: succeed in their education, career, academics, serve as a center of information for women engineering students and faculty, promote the value of diversity.

İTÜ Career Service invites private companies for **Career Days**, three days in a year to meet with our students in publicity days for the better presentation of their thesis and projects, as well as job interviews. Faculty of Mines and Department with the İTÜ Career Services and the staff who work with students to develop a career planning process help engineering students develop job search strategies for internships and career employment; connections with İTÜ alumni working in regional, national, and multi-national corporations.

Medical Center: There is a small Medical Center including an biochemistry laboratory an X-ray unit in the campus. An ambulance is always ready to call within the Campus for emergency. A modern, private hospital is opened very near to İTÜ campus. All university personal get benefits from the University of Istanbul, Çapa Medical School and Cerrahpaşa Medical School hospitals which are considered as the most sophisticated and two of the top quality university hospitals in Turkey.

PERSONNEL AND POLICIES

Faculty Salaries/Benefits/ Workload/ Promotion

1. İTÜ is a state university, and salaries are determined by government scales depending on the education level and years of service. Differences in salaries are based on academic rank and years of service. Faculty salary data are given in [Table D-6](#). Monthly net salary after all tax deductions are reported taking the January 2010 salaries as the basis, and the USD exchange rate.
2. Faculty members are provided financial support for scientific research works through University Research Funds State Planning Organization funds, and fund from the Scientific and Technical Research Council of Turkey (TÜBİTAK). TÜBİTAK also supports faculty members based on publications and their rates change every year according to impact factor of the journal.
3. İTÜ provides support by giving awards to SCI group publications through the İTÜ Development Foundation (e.g., 1350 US\$ for A group journals). İTÜ Scientific Research Fund (BAP) supports up to one international conference attendances once a year if the faculty presents paper. Some faculty members are also actively involved in applied research supported by various state organizations and private enterprise. The list of the support expenditures of the Faculty of Mines is given in [Table D-3](#).
4. The paid vacation is 30 days per year for staff who have served up more 10 years. Employees can be given a paid leave of absence for the reasons of marriage, death in immediate family, birth. The tenure-track faculty includes full professors, associate professors, and assistant professors can take sabbatical leave every six years.
5. İTÜ faculty housing is available for faculty, staff and grad-students based on merit and service (maximum duration of 5-years) to compensate for low salaries. İTÜ childcare facilities serve for the children from 3 months to first grade age located at the two campuses. The *İTÜ Foundation Schools* (private pre-school, elementary school and high school) located

in the Maslak Campus, also provide education with a substantial subsidy for İTÜ faculty, staff, grad-students and alumni.

6. All of the university staff is government employees, the comprehensive health care benefits are provided by the state. The government provides retirement benefits. The mandatory age of retirement at Turkish Universities is 67 years.
7. Average load for full-time faculty is 10 credit hours that correspond to two courses and at least one project and/or thesis per semester. Faculty members are expected to conduct research, do academic advising, participate in administrative work, writing research proposals to bring research grant to the department and take place in committees. Faculty of Mines also expects the faculty to announce regular office hours to be available to students outside regular class hours. Besides, teaching at private or foundation universities for faculty members are available under the content of İTÜ administration.
8. İTÜ Academic Appointment and Promotion Criteria (*point system*) were established to use point system to standardize the academic performance requirements more quantitatively and to provide relatively equal opportunity to the candidates who wants to get promotion..
9. After evaluation of the technical publications of the candidates according to İTÜ criteria set by İTÜ's Administrative Board, the jury proposes the candidate(s) to be appointed. The final decision is made by the Faculty Administrative Board. An assistant professor may be appointed for two years. At the end of each two-year term, the Faculty Administrative Board evaluates the performance of the assistant professor and decides for reappointment or termination of employment.
10. Tenure starts with associate professorship. The appointment to a tenured position is not automatic. The candidate is subjected to a procedure composed of two parts; 1) the review of technical publications and 2) an oral scientific examination. The examination is conducted by a jury formed by YÖK and includes members from various universities. The “Associate Professor” title is conferred by YÖK. The criteria for appointment are defined by İTÜ's Administrative Board. The Dean of Faculty of Mines first evaluates the request and the final decision is taken at the University Executive Council.

The process of promotion to the full professorship starts after the candidate formally submits his/her documents to the President's Office minimum five years after receiving associate professor title. Before initiation of this procedure, first Chairman's approval and then, Dean's approval are required by the President's Office. The University Executive Council assigns the academic jury to evaluate the application. The application is also reviewed at the Faculty of Mines Executive Council in accordance with the qualification criteria for promotion. The minimum requirements are research and international publications. The University Executive Council takes the final decision based on the recommendation of the jury members and the Faculty of Mines Executive Council. The President approves the appointment taking into account the jury reports, the decision of the University Executive Board and the Faculty of Mines recommendation.

SCIENTIFIC RESEARCH AND ISSUES

In 2009, 48 projects are accepted to 65 projects are conducted and finished by the Faculty. More than 46 national and 36 international scientific meetings were participated such as conference, congress, seminars, symposiums. The scientific activities of the members of Faculty of Mines are given in **Table D-9 Figure 11**. Our students are also taking part and involving in research projects doing graduation projects and summer trainings.

SUPPORT

Faculty Budget and Sources of Financial Support

The operating budget of the Faculty of Mines is prepared by the Dean's Office in standard format in accordance with the guidelines provided by the Council of Higher Education (YÖK). Departments do not have individual budget. This budget proposal is reviewed in the Faculty Executive Board and submitted to the President's administration during the month of April for the next fiscal year. The proposals are discussed and finalized in the University Executive Council and submitted to the YÖK. All state university budgets are finally approved by the Turkish Parliament before the end of the year. The expenditures for support functions of the Faculty of Mines are presented in **Table D-3**, which covers the previous (2008 and 2009) and the current (2010) fiscal years. Our fiscal years are calendar years and the year of visit of the ABET team is the same with the current year. In the tables the USD exchange rate is taken as 1.23 TL for 2008, 1.54 TL for 2009 and 1.53 TL for 2010.

Financial Aids for Students

There are many financial aids programs to support financially and to improve living accommodation standards of students during their engineering education periods. The most common one among these supports is "food aids" program, which has been given all students if they applied, supported by İTÜ administration during 2009 and 2010 periods (**Table D-3.2**).

Other financial aids programs are available mostly for the successful students who cannot get support from other programs. İTÜ Foundation and also National Mining Development Foundation, which provide financial supports to the students for a long time, support students to complete their educations. Some organizations, such as Sabancı and Koç Foundations, give much higher financial aids and covers for the period of continuation of student's education.

The Faculty of Mines distributes these financial aids through the Financial Aids Commission and students apply these programs with standards application forms and deadlines advertise in both bulletin boards and İTÜ web pages. Applications evaluate in the Commission, suggestions submit to the Dean's Office and final decision is given in the Faculty Board meeting. One of the

fundamental purposes of the Faculty of Mines Foundation, which was established in 1994, is to support organized scientific symposiums, professional meetings and to give fellowships to the students. The summary of all financial aids program from different foundations are listed in **Table D-3.2**.

Supports of the İTÜ-Faculty of Mines Foundation

The mission of the Faculty of Mines Foundation is to provide financial support for educational scholarships to Faculty students. The renovation works need for the Faculty is also partly supported by this Foundation since last five years. Offices for Student Clubs in Gabronite Cafeteria were completely constructed by Faculty of Mines Foundation.

Several social activities such as New Year's Day, Faculty Day and Special occasions are also financially supported since last five years. The list of the support expenditures of Faculty of Mines Foundation in last four years is given in **Tables D-3.1**.

Other Financial Aids and Donations

Alumni organization, Turkish Petroleum Corporation, some private companies provide financial aids to support undergraduate students. İTÜ administration provides additional financial aid for the students who have financial difficulties and some successful students in two different programs. İTÜ provide food support of three meals a day for students in the Central Cafeteria.

Major donation comes from mining industry. Two laboratories, Optical Mineralogy Laboratory and Faculty Library are renovated by *Kemal DEDEMAN* (owner of Dedeman Mining Corporation) and *Hamdi BOZBAĞ* (owner of Turkish Barit Mining Corporation), respectively. Besides, nine new LECIA petrographic student microscopes were donated by Dedeman Mining Corporation. Faculty of Mines and Departments generally receive many small donations from various mining industries (**Tables D-3**).

Alumni are the University's primary legacy to the society it serves. They also provide crucial resources via scholarships, internships, gifts and endowments.

Research Support

The Faculty, through University Research Funds State Planning Organization funds, and fund from the Scientific and Technical Research Council of Turkey, can obtain financial support for their scientific research works. Some Faculty members are also actively involved in applied research supported by various state organizations and private enterprise (Figure 11).

The Department Industry interaction and/or joint projects are proceeding in an increasing rate. Such projects involve both interdisciplinary and departmental team-work and provide an excellent opportunity to research assistants and to graduate students to gain experience and share responsibility in such projects. The list of the support expenditures of the Faculty of Mines is given in Table D-3.

Research and development activities are financed through multiple sources at İTÜ. The main support sources are:

- Governmental research budget administered by Scientific Research Project Unit of the University (SRPU)
- State Planning Organization (DPT) supported projects administered by SRPU
- TÜBİTAK research support for nationwide calls administered by TÜBİTAK
- International research projects supported by NATO, EU, TÜBİTAK and the parent institutions
- National projects supported by central and local governments and private sector administered by İTÜ Revolving Fund, İTÜ Development Foundation and İTÜ Foundation.

For example, some of the current DPT Technological Research Projects granted to İTÜ are as follows:

- Development of Mining Technologies in Black Sea and Balkan Countries
- Mineralogy- Mines Advanced Research Center granted in 2008

The Scientific and Technological Research Council of Turkey (TÜBİTAK):

TÜBİTAK (<http://www.tubitak.gov.tr/>) is responsible for promoting, developing, organizing, conducting and coordinating research and development in Turkey. The Council is an autonomous institution and is governed by a Scientific Board whose members is selected from universities, industry and research institutions. TÜBİTAK supports research projects carried out in universities and other public and private organizations, conducts research on strategic areas, develops support programs for public and private sectors, publishes scientific journals, popular science magazines and books, organizes science and society activities and supports undergraduate and graduate students through scholarships.

The Council of Higher Education (YÖK): <http://www.yok.gov.tr/>

Since 1981 the Council of Higher Education of Turkey is a fully autonomous supreme corporate public body responsible for the planning, coordination, governance and supervision of higher education within the provisions set forth in the Constitution and the Higher Education Law.

Figures and Tables

This section includes figures and tables to help to understand the Faculty of Mines

Index of Figures

Figure 1. İTÜ Organizational Chart

Figure 2. Faculty of Mines Organizational Chart

Figure 3. The total number of Academic Staff of the Faculty of Mines

Figure 4. The number of professors of the Faculty of Mines

Figure 5. The number of research assistant of the Faculty of Mines

Figure 6. Events in İhsan Ketin Conference Hall of Faculty of Mines.

Figure 7. The total number of students in the Faculty of Mines

Figure 8. Gendered distribution of student enrollments in the Faculty of Mines

Figure 9. Total number of the graduated students in the Faculty of Mines.

Figure 10. Projects of the Faculty of Mines completed in 2008-2009 Period.

Figure 11. Distribution of SCI papers for faculties in İTÜ.

Index of Tables

Table D-3. Support Expenditures

Table D-3.1. Support Expenditures from İTÜ-Faculty of Mines Foundation

Table D-3. 2. Departmental distribution of educational scholarships of Faculty of Mines

Table D-4. Personnel and Students

Table D-5. Program Enrollment and Degree Data for İTÜ

Table D-5.2. Transfer, Double Major, Minor and ERASMUS Students for Past Five Years

Table D-5.3. Bilateral Agreements under Erasmus Student Mobility Program

Table D-5.4. Student Industry Trainings

Table D-6. Faculty Salary Data

Table D-9. Scientific activities of the Faculty of Mines

ISTANBUL TECHNICAL UNIVERSITY ORGANIZATION CHART

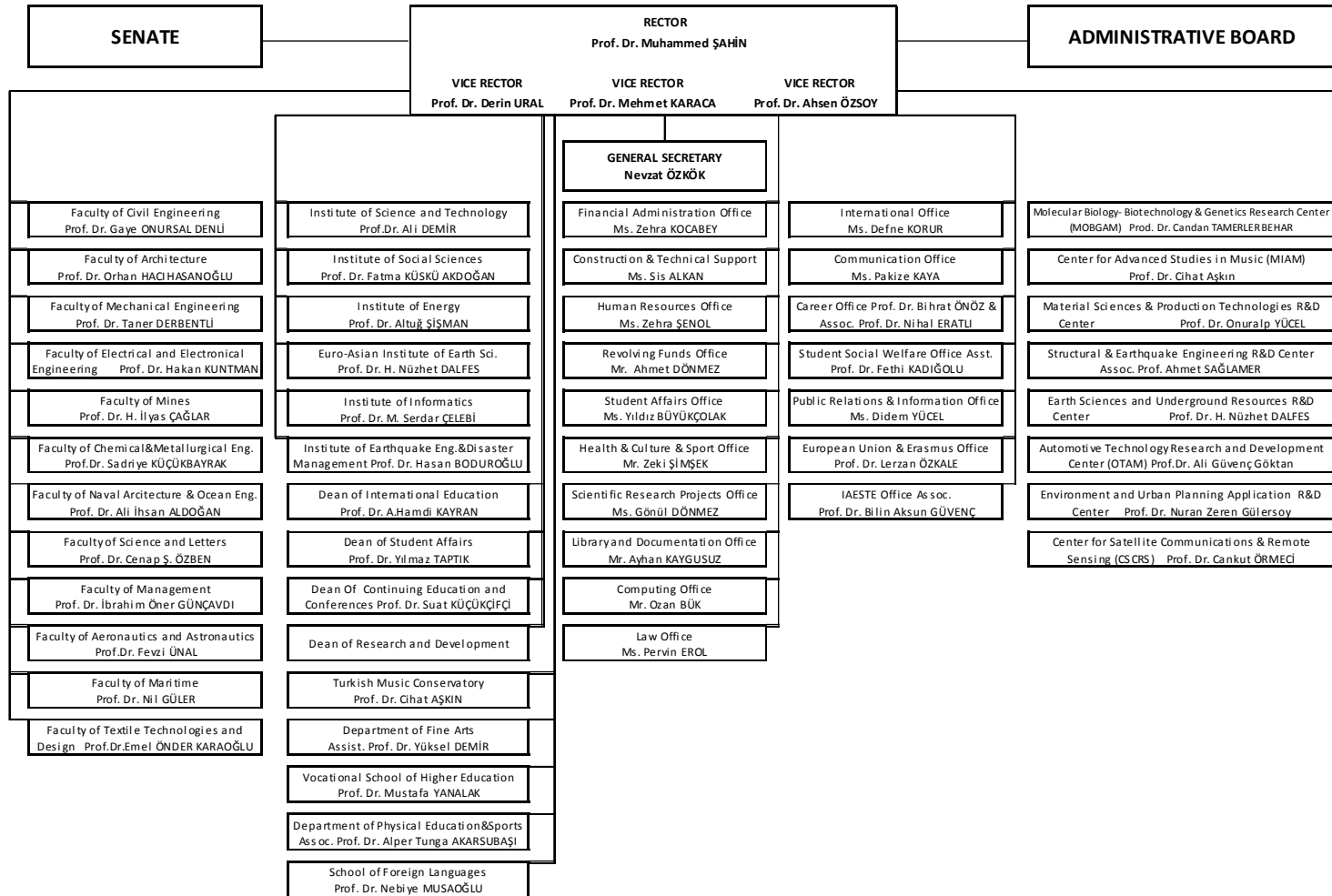


Figure 1. Organizational structure of Istanbul Technical University.

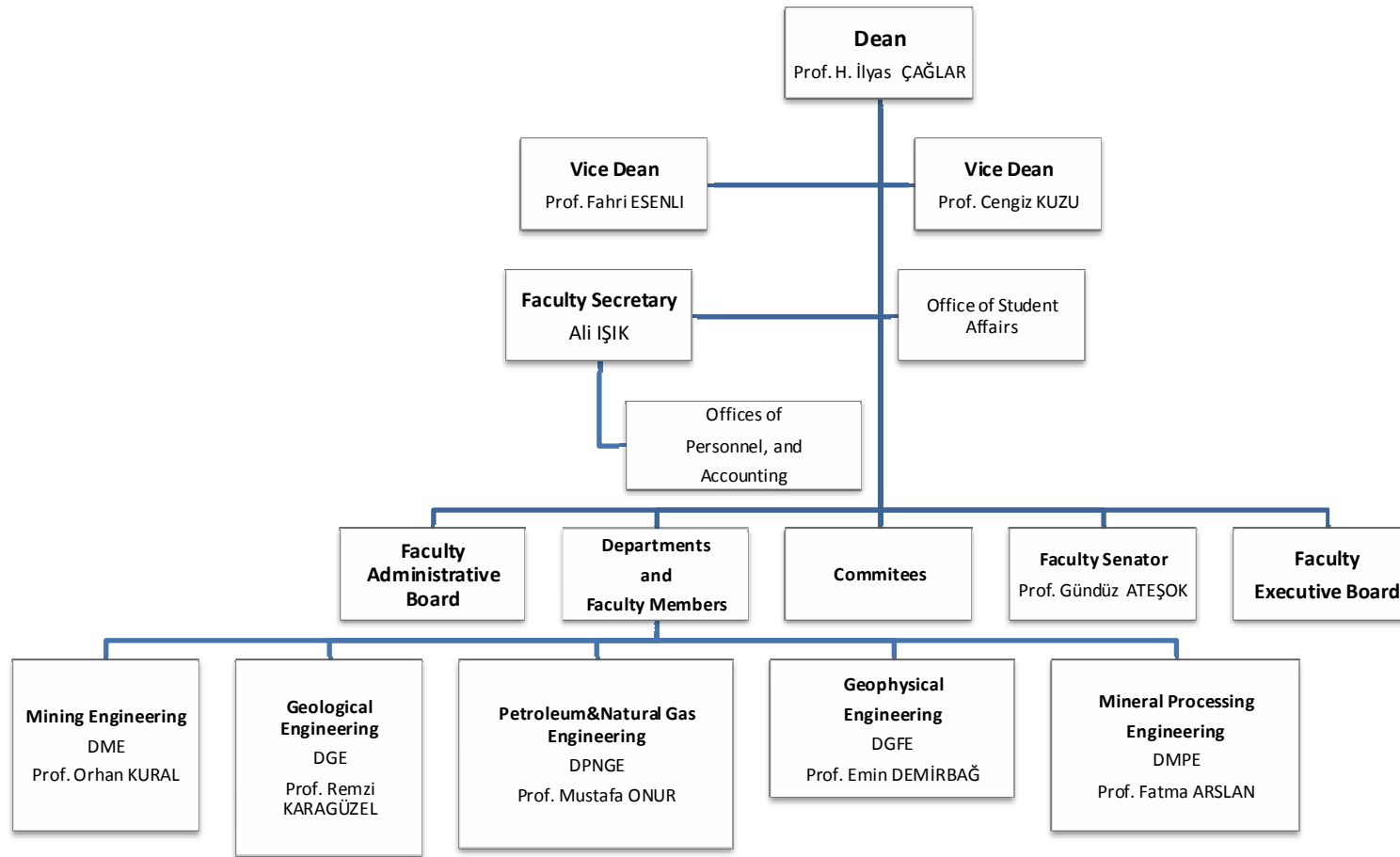


Figure 2. Organizational structure of the Faculty of Mines.

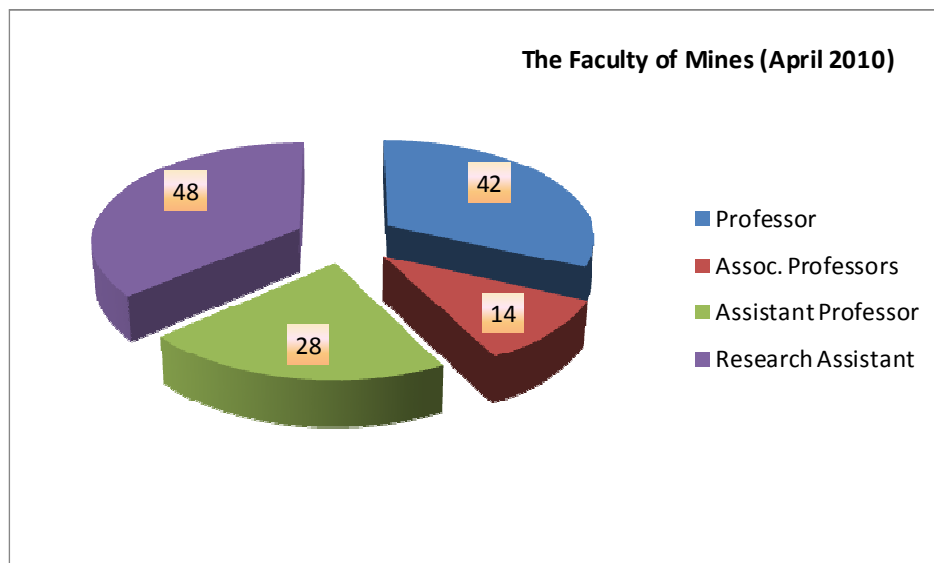


Figure 3. The total number of Academic Staff of the Faculty of Mines.

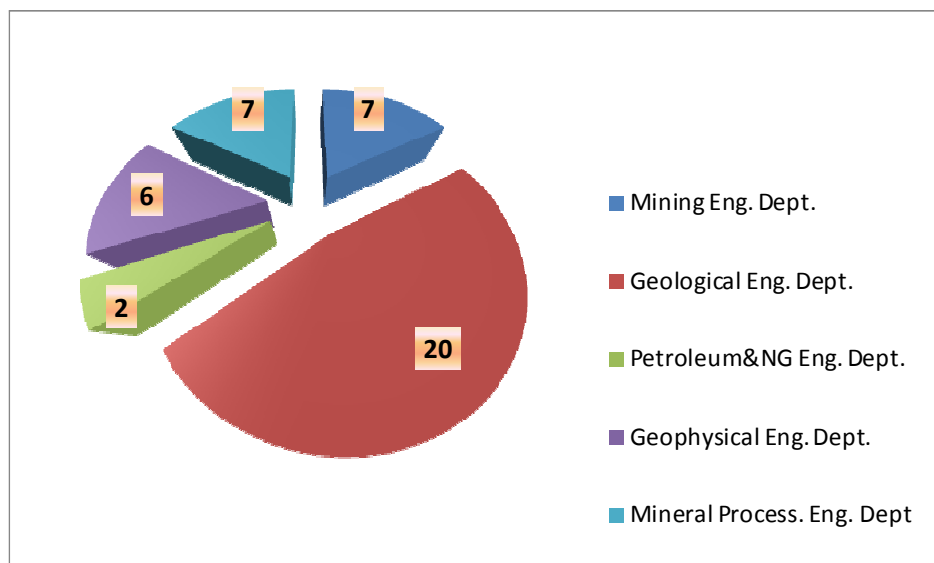


Figure 4. The number of professors of the Faculty of Mines.

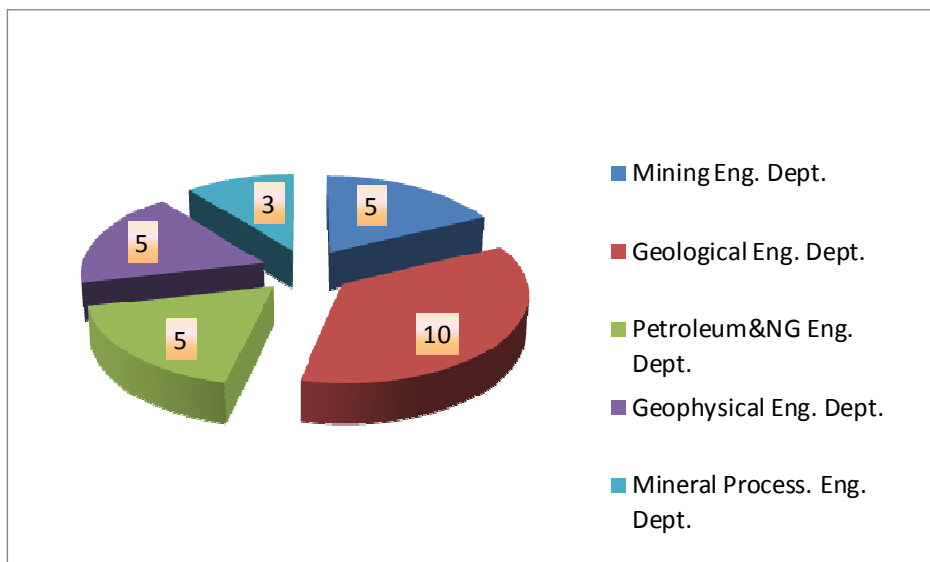


Fig 6. The number of Assistant professors of the Faculty of Mines

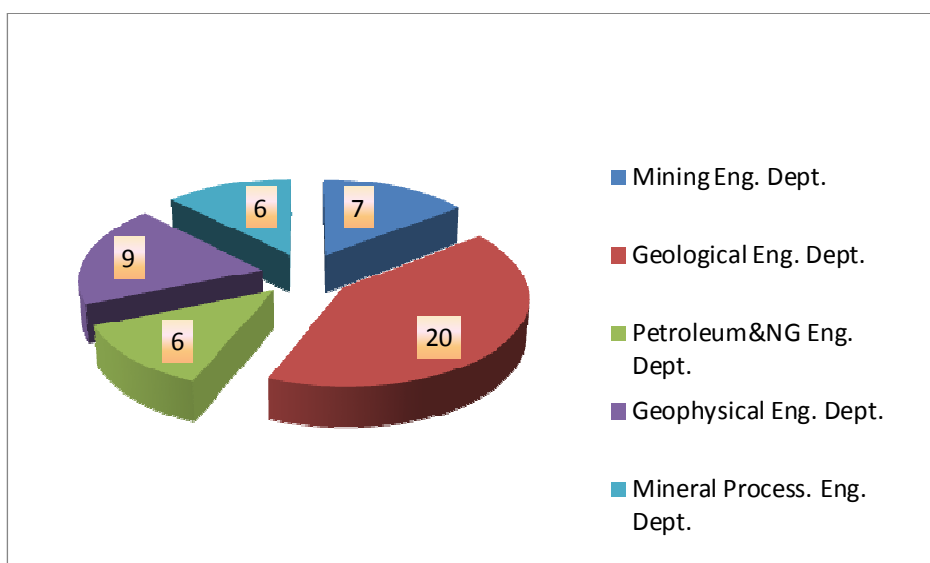


Figure 5. The number of research assistant of the Faculty of Mines.

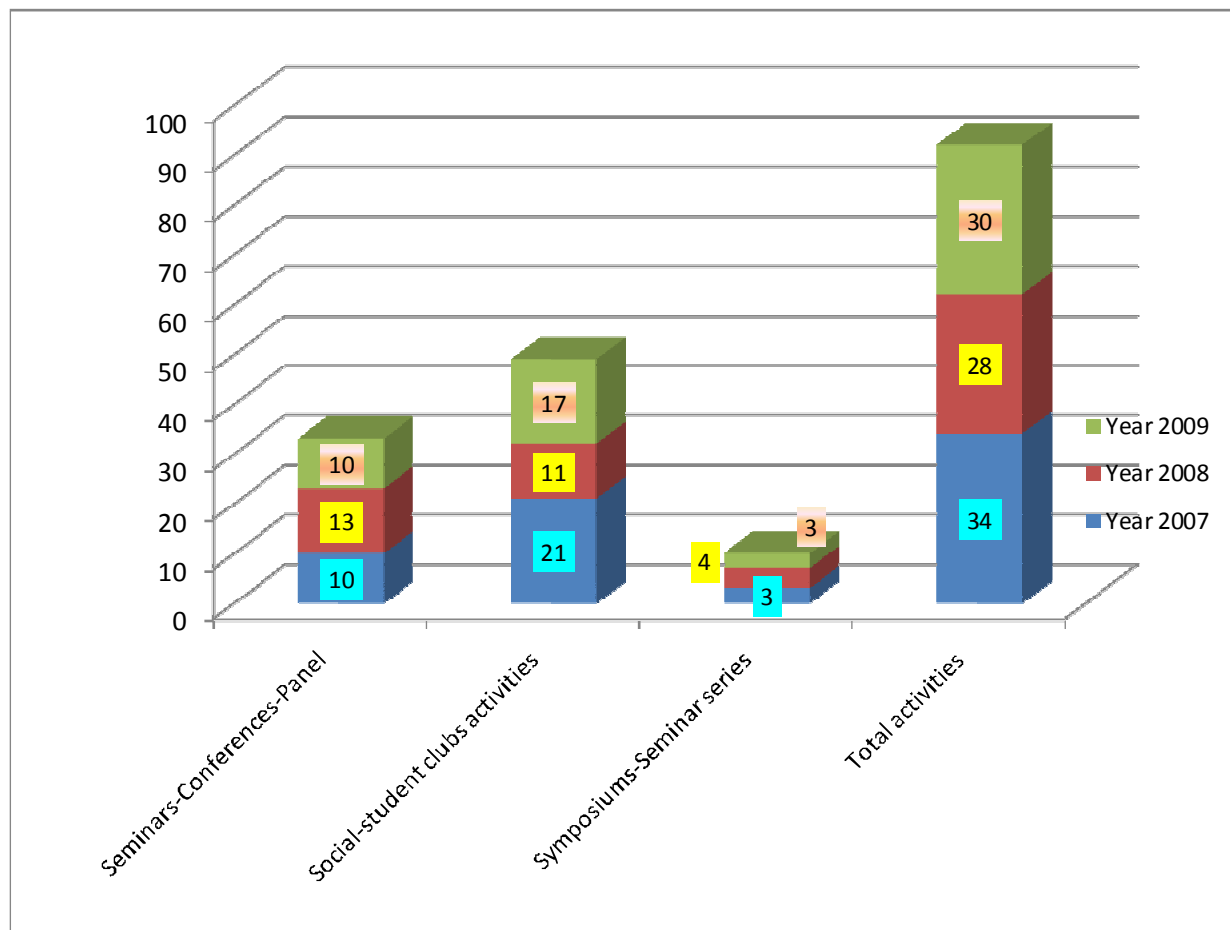


Figure 6. Events in Ihsan Ketin Conference Hall of Faculty of Mines.

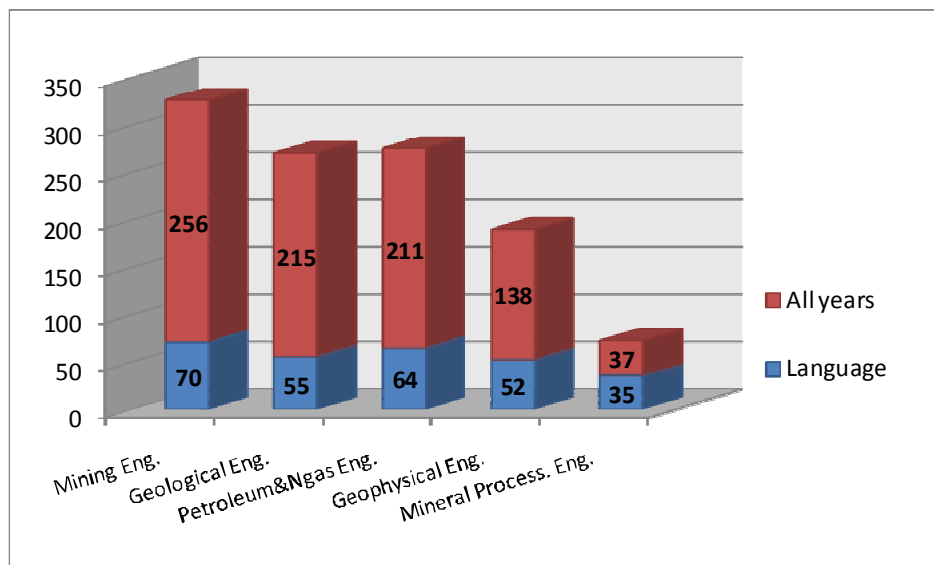


Figure 7. The total number of students in the Faculty of Mines (January, 2010).

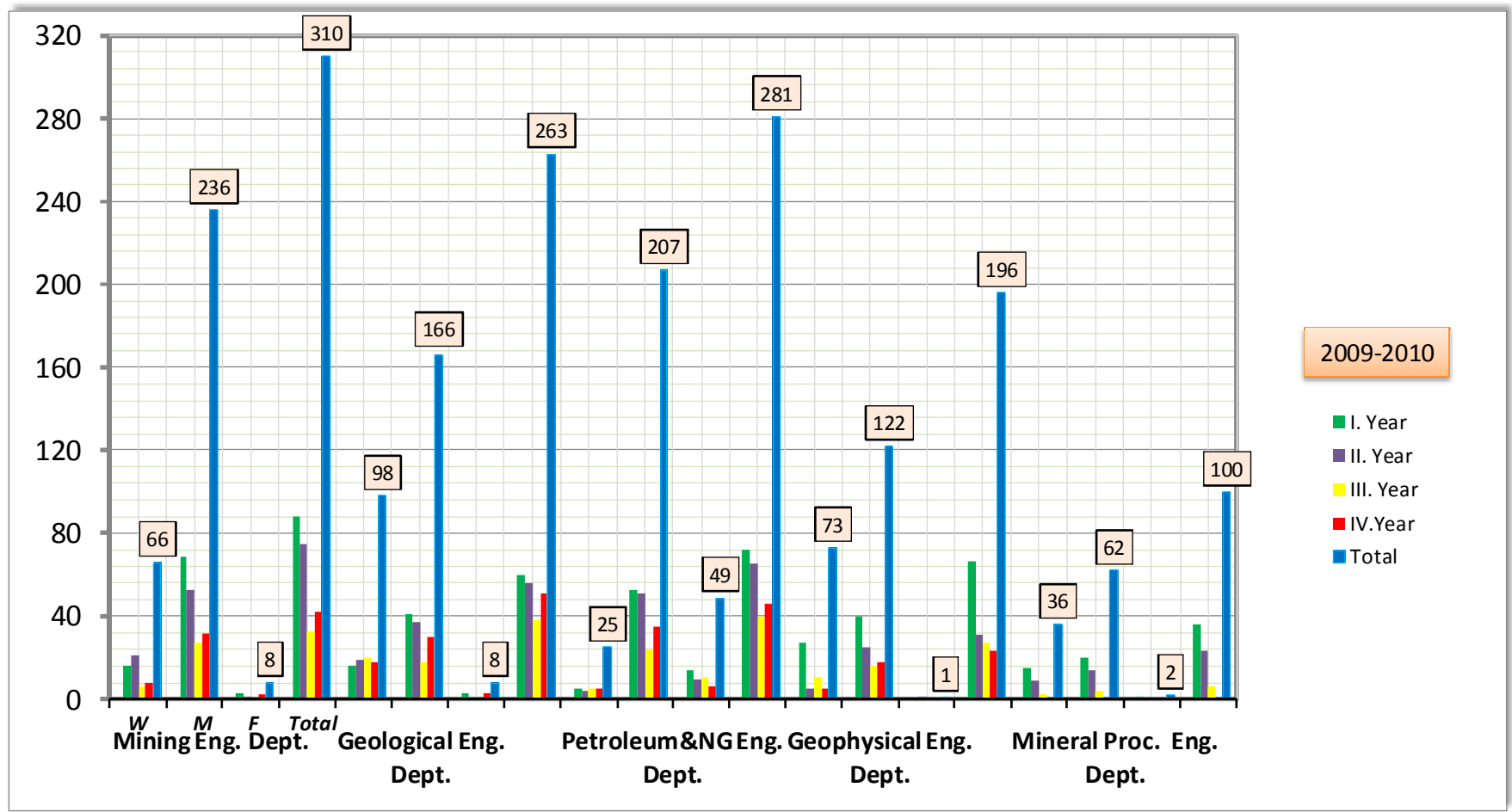


Figure 8. Gendered distribution of student enrollments in the Faculty of Mines. Students registered in the engineering programs are given by numbers based on the İTÜ Automation System during 2009-2010 academic year (W: female, M: male, F: foreign students).

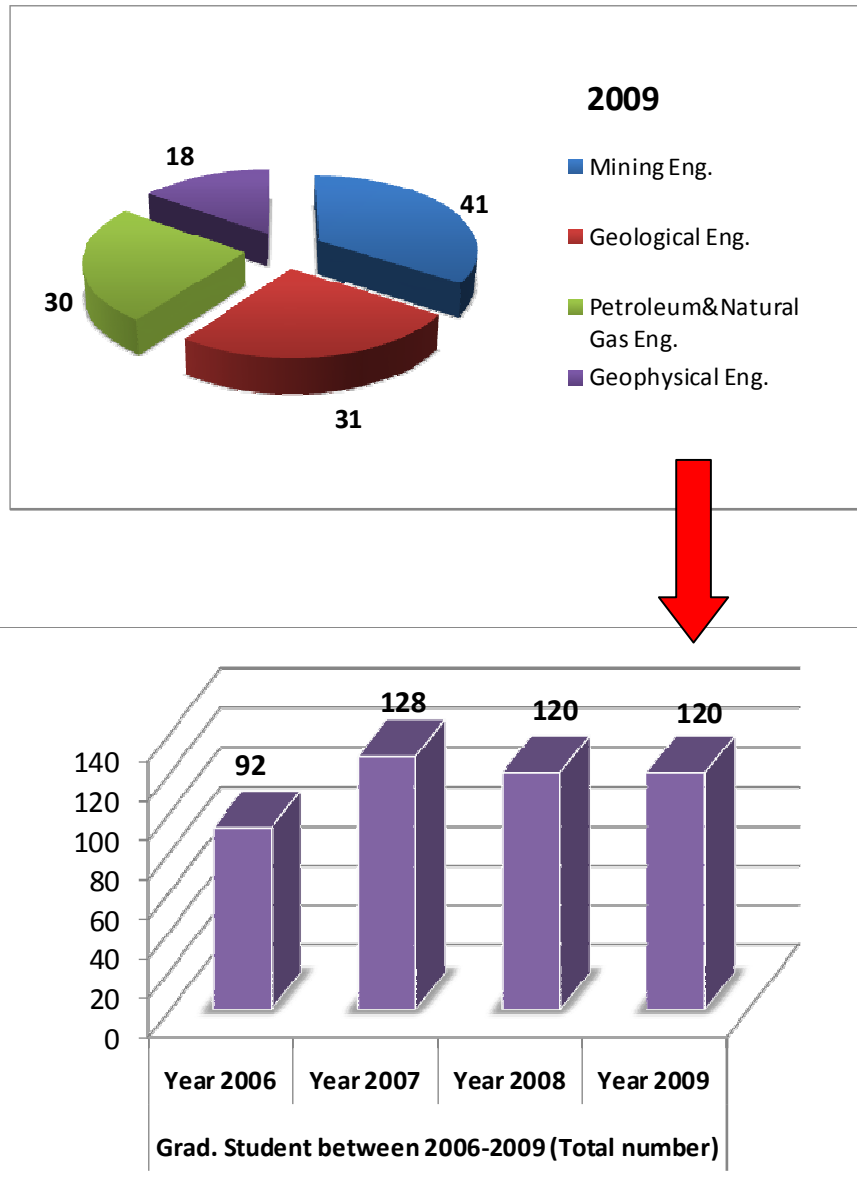


Figure 9. Total number of the students graduated in the Faculty of Mines in 2006-2009.

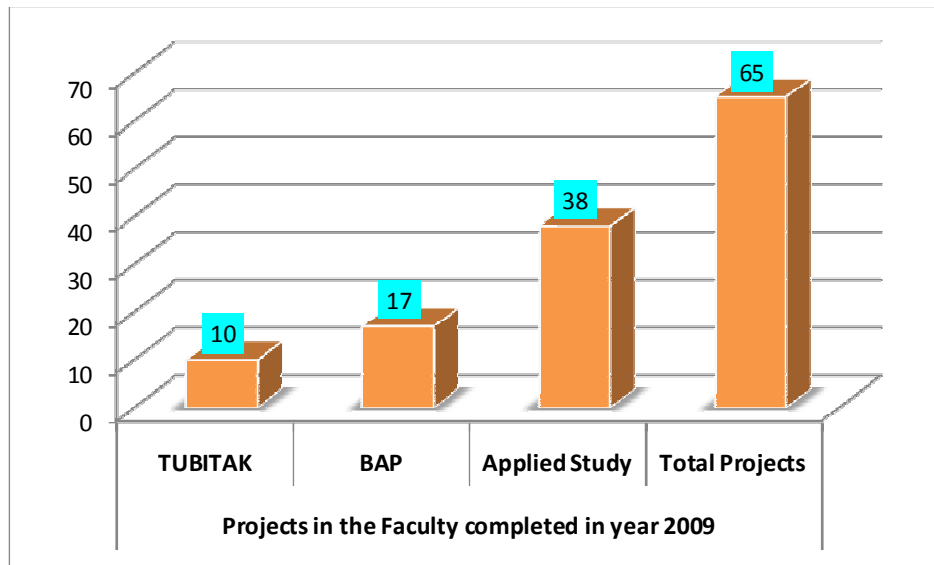


Figure 10. Projects in the Faculty of Mines completed in 2008-2009 Period (*TUBITAK - The Scientific and Technological Research, Council of Turkey Project; BAP - İTÜ Research Fund Project*).

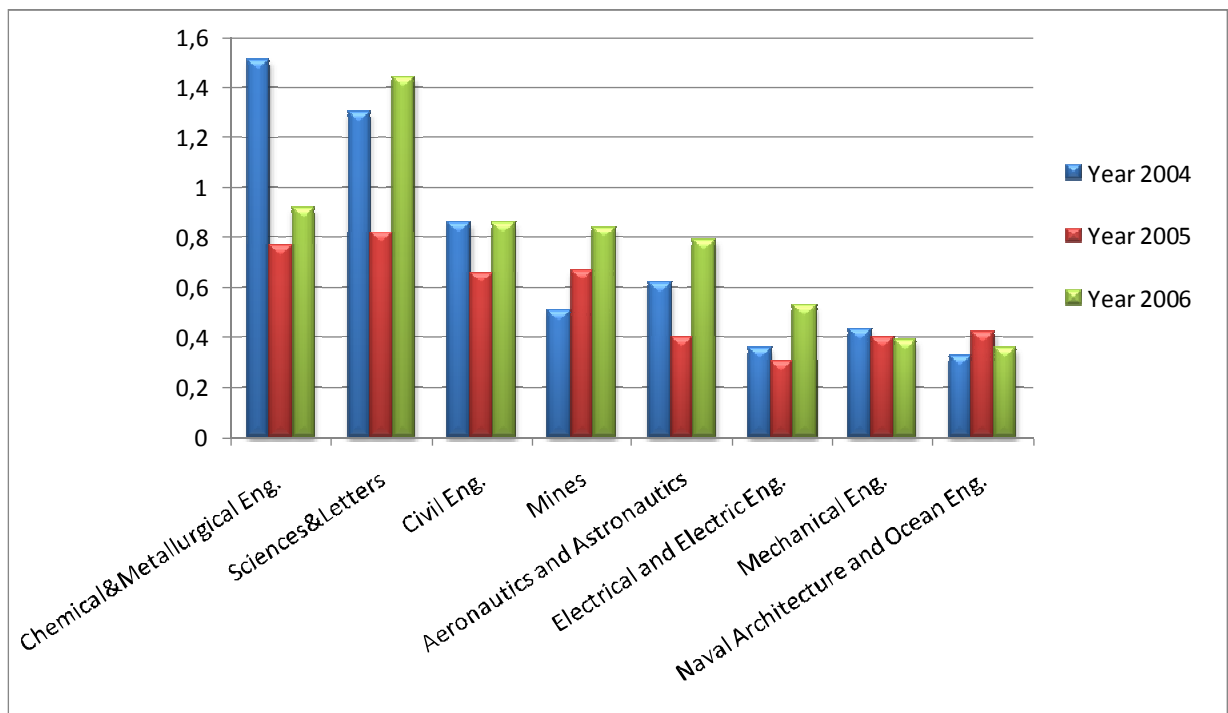
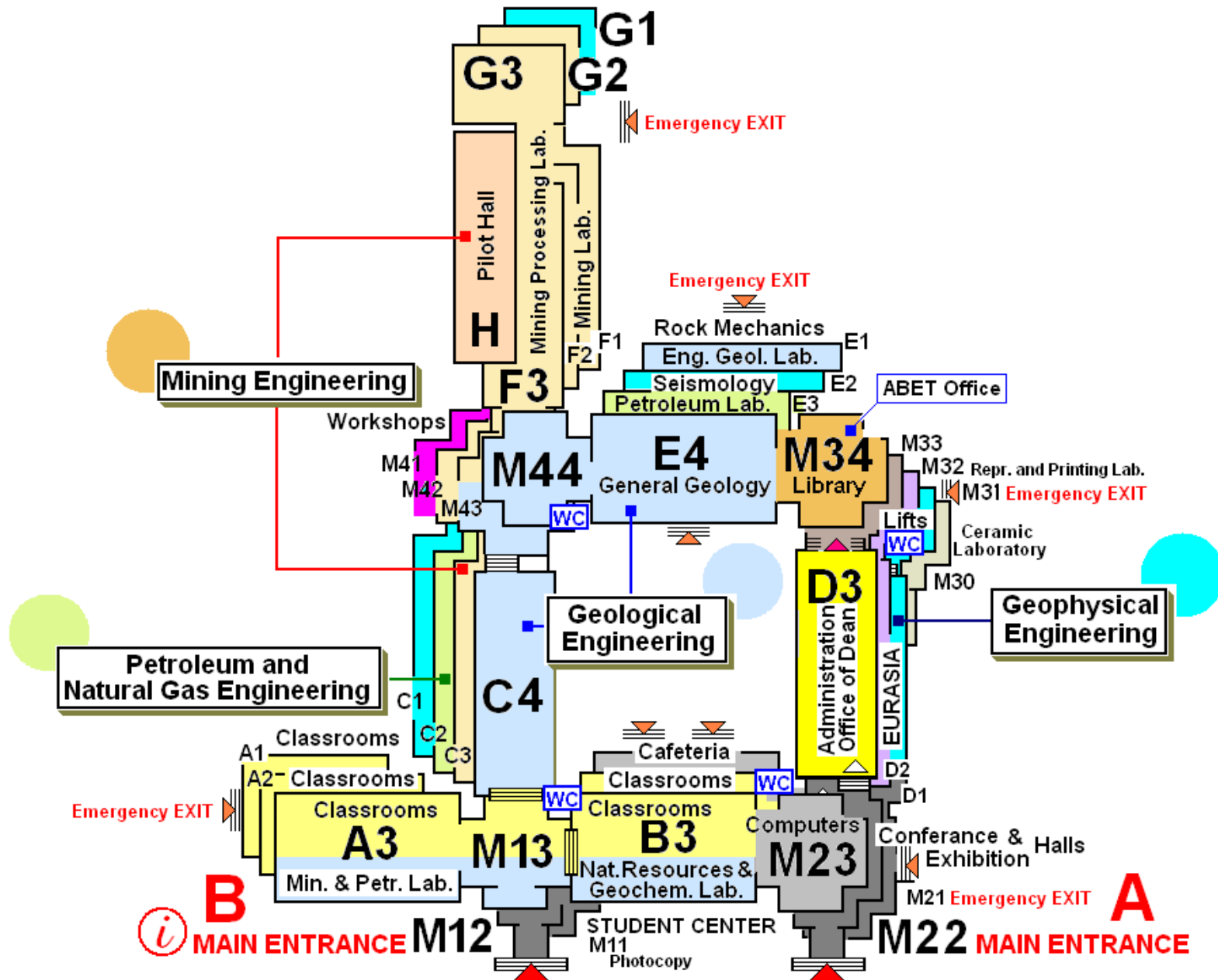


Figure 11. Distribution of SCI papers for faculties in İTÜ. Numbers indicates SC-type international publications for several engineering schools of İTÜ. The values are calculated as per faculty member.



TABLES

Table D-3. Support Expenditures (in US\$) *

**Faculty of Mines
Engineering Educational Unit**

Fiscal Year		2	3	4
		2008 (US\$)	2009 (US\$)	2010 ^{***} (US\$)
Expenditure Category				
Operations (not including staff)		37,240	35,390	35,490
Travel ^(**)	Budget	18,300	19,500	22,900
	Used	11,035	11,030	2,617 ^(***)
Equipment				
(a) Institutional Funds		20,890	19,290	21,300
(b) Grants and Gifts		-	-	-
Graduate Teaching Assistants		778,746	748,526	359,258
Part-time Assistance (other than teaching)		1124	820	1019
Faculty Salaries		2266,612	2097,017	1035,657

(*) 1 US\$ (=1,53 TL – Year 2010; 1.54 TL - Year 2009; 1.23 TL – Year 2008)

(**) International travel is not included since that is supported by Rectorate budget.

(***) first five month

Mining Engineering				
Fiscal Year		2	3	4
		2008 (US\$)	2009 (US\$)	2010 ^{***} (US\$)
Expenditure Category				
Operations (not including staff)		6,207	5,898	5,915
Travel ^(**)	Budget	18,300	19,500	22,900
	Used	1,425	1,040	344 ^(***)
Equipment				
(a) Institutional Funds		3,482	3,215	3,550
(b) Grants and Gifts		-	-	-
Graduate Teaching Assistants		159,946	174,653	52,887
Part-time Assistance (other than teaching)		-	68	-
Faculty Salaries		309,806	310,170	190,306

Geological Engineering				
Fiscal Year		2	3	4
		2008 (US\$)	2009 (US\$)	2010^{***} (US\$)
Expenditure Category				
Operations (not including staff)		6,207	5,898	5,915
Travel ^(**)	Budget	18,300	19,500	22,900
	Used	4,360	5,460	1,916 ^(***)
Equipment				
(a) Institutional Funds		3,482	3,215	3,550
(b) Grants and Gifts		-	-	-
Graduate Teaching Assistants		332,864	334,030	165,452
Part-time Assistance (other than teaching)		-	647	705
Faculty Salaries		1004,582	895,627	414,871

Petroleum & Natural Gas Engineering				
Fiscal Year		2	3	4
		2008 (US\$)	2009 (US\$)	2010^{***} (US\$)
Expenditure Category				
Operations (not including staff)		6,207	5,898	5,915
Travel ^(**)	Budget	18,300	19,500	22,900
	Used	610	3,780	357 ^(***)
Equipment				
(a) Institutional Funds		3,482	3,215	3,550
(b) Grants and Gifts		-	-	-
Graduate Teaching Assistants		99,540	72,879	44,983
Part-time Assistance (other than teaching)		1124	102	314
Faculty Salaries		235,032	190,833	93,132

Geophysical Engineering				
Fiscal Year		2	3	4
		2008 (US\$)	2009 (US\$)	2010 ^{***} (US\$)
Expenditure Category				
Operations (not including staff)		6,207	5,898	5,915
Travel ^(**)	Budget	18,300	19,500	22,900
	Used	3,540	750	-
Equipment				
(a) Institutional Funds		3,482	3,215	3,550
(b) Grants and Gifts		-	-	-
Graduate Teaching Assistants		109,246	95,511	58,311
Part-time Assistance (other than teaching)		-	-	-
Faculty Salaries		406,873	375,675	179,394

Mineral Processing Engineering				
Fiscal Year		2	3	4
		2008 (US\$)	2009 (US\$)	2010 ^{***} (US\$)
Expenditure Category				
Operations (not including staff)		6,207	5,898	5,915
Travel ^(**)	Budget	18,300	19,500	22,900
	Used	1,100	-	-
Equipment				
(a) Institutional Funds		3,482	3,215	3,550
(b) Grants and Gifts		-	-	-
Graduate Teaching Assistants		77,150	71,453	37,635
Part-time Assistance (other than teaching)		-	-	-
Faculty Salaries		310,319	324,712	157,954

Table 12: The list of the support expenditures of ITU-Faculty of Mines Foundation (USD) ^(*) .																									
Supported item	Year 2007					Year 2008					Year 2009					Year 2010 ^(**)					Total				
Faculty Renovation works	10,745					15,400					14,108					6,260					46,513				
Seminars-conferences	3,660					4,705					4,915					3,570					16,850				
Student field training	---					1,220					1,950					---					3,170				
Social activities	1,170					1,710					1,820					--					4,700				
Educational scholarships and gifts (<i>JEF: Gifts from Cahit Çoruh are included</i>)	ME	GE	PNS	GFE	MP	ME	GE	PN	G	GFE	ME	GE	PN	G	GFE	ME	GE	PN	G	GFE	ME	GE	PN	G	GFE
	80	80	80	80	----	300	220	100	2,132		357	290	325	1,753		294	229	327	1,633		1,031	819	832	5,598	

(*) 1 US\$ (=1.53 TL – Year 2010; 1.54 TL - Year 2009; 1.23 TL – Year 2008)

(**) first five months

Abbreviations: ME: Mining Eng., GE: Geological Eng., PNG: Petroleum&NGas Eng., GEF: Geophysical Eng., MPE: Mineral Processing Eng.

Table D-3.2. Departmental distribution of scholarships of Faculty of Mines

Establishment / Institution / Foundation		Mining Engineering				Geological Engineering				Geophysical Engineering				Petroleum & Natural Gas Engineering				Mineral Processing Engineering				Faculty of Mines TOTAL		
		2007-2008	2008-2009	2009-2010	Total	2007-2008	2008-2009	2009-2010	Total	2007-2008	2008-2009	2009-2010	Total	2007-2008	2008-2009	2009-2010	Total	2007-2008	2008-2009	2009-2010	Total	2007-2008	2008-2009	2009-2010
İTÜ Food Aid	Granted	15	36	32	83	13	29	27	69	8	19	20	47	13	28	29	70	1	4	1	6	50	116	105
	Applied	39	53	32	124	29	41	27	97	16	32	20	68	59	117	29	202	2	11	1	14	145	254	122
İTÜ-Foundation	Granted	1	2	2	5	1	1	2	4	1	-	1	2	1	1	1	3	1	-	1	2	5	14	7
	Applied	1	4	2	7	1	4	2	7	2	1	2	5	3	8	2	13	2	-	1	3	9	17	9
İTÜ-Faculty of Mines Foundation	Granted	1	1	1	3	1	1	1	3	1	5	6	12	1	3	4	8	-	1	1	2	4	11	13
	Applied	1	1	1	3	1	1	1	3	1	5	6	12	1	3	4	8	-	1	1	2	4	11	13
Educational Foundation of Turkey	Granted	1	-	1	2	1	-	1	2	-	1	-	1	1	-	1	2	-	1	1	2	3	2	4
	Applied	6	-	2	8	3	-	2	5	2	3	-	5	13	-	4	17	1	2	3	6	25	5	11
National Mining Development Foundation	Granted	2	2	2	6	2	2	2	6	1	1	1	3	1	1	1	3	1	1	3	5	7	7	9
	Applied	4	4	3	11	16	5	6	27	4	4	3	11	16	3	2	21	2	4	5	11	42	20	19
The Council of Higher Education Scholarship	Granted	-	6	5	11	5	4	-	9	-	3	2	5	-	5	5	10	-	1	2	3	5	19	14
	Applied	-	7	8	15	8	6	-	14	-	4	5	9	-	7	6	13	-	2	3	5	8	26	22
Hacı Ömer Sabancı Foundation-Vehbi Koç Foundation-Salih Karagöz Foundation-Mehmet Zorlu Foundation	Granted	1	1	1	3	-	-	1	1	1	1	3	5	1	-	3	1	4	1	1	6	7	3	9
	Applied	3	4	3	10	2	2	3	7	5	3	3	11	3	2	6	11	6	3	3	12	19	14	18
TOTAL GRANTS		21	48	44	111	23	37	34	94	12	30	33	75	18	38	44	97	7	9	10	26	81	172	161
TOTAL APPLYERS		54	73	51	178	60	59	41	160	29	52	39	121	95	140	53	285	13	23	17	53	252	347	214

Table D-4. Personnel and Students

**İTÜ - for all undergraduate Programs (except Turkish Music State Conservatory)
in academic year of 2009-2010**

	HEAD COUNT		FTE	RATIO TO FACULTY
	FT	PT		
Administrative				
Faculty (tenure-track)	931		931	
Other Faculty (excluding student Assistants)	215		215	
Student Teaching Assistants (+ R.A.) =	767		767	6.61
Student Research Assistants				
Technicians/Specialists	81		81	0.07
Office/Clerical Employees				
All Undergraduate Students enrollment	17274		17274	15.07
All Graduate Students enrollment	7200		7200	6.28

Faculty of Mines (2009-2010 Spring)

	HEAD COUNT		FTE	RATIO TO FACULTY*
	FT	PT		
Administrative	15	-	7.5	
Faculty (tenure-track)	85	1	85	
Other Faculty (excluding student Assistants)	8	8	10	
Student Teaching Assistants	48	-	96	0.36
Student Research Assistants	-	-	-	-
Technicians/Specialists	16	-	16	0.06
Office/Clerical Employees	37	-	37	0.14
Others**	15	-	15	0.06
Undergraduate Student enrollment***	881	-	1180	4.42
Graduate Student enrollment	162	-	217	0.81

(*) The average number of credits of a student per semester is 20 hours and FTE of each student is calculated as 1.34

(**) Security personnel and cleaning personnel

(***) This number includes freshman, sophomores, junior, senior

Table D-4. Mining Engineering Department (2009-2010 Spring)

	HEAD COUNT		FTE ²	RATIO TO FACULTY*
	FT	PT		
Administrative	3	-	1.5	
Faculty (tenure-track)	14	-	14	
Other Faculty (excluding student Assistants)	3	-	3	
Student Teaching Assistants	7	-	14	0.37
Student Research Assistants	-	-	-	-
Technicians/Specialists	3	-	3	0.08
Office/Clerical Employees	2	-	2	0.05
Others**	-	-	-	-
Undergraduate Student enrollment***	238	-	319	8.51
Graduate Student enrollment	61	-	82	2.2

Geological Engineering Department (2009-2010 Spring)

	HEAD COUNT		FTE	RATIO TO FACULTY*
	FT	PT		
Administrative	3	-	1.5	
Faculty (tenure-track)	34	1	34	
Other Faculty (excluding student Assistants)	4	-	4	
Student Teaching Assistants	20	-	40	0.45
Student Research Assistants	-	-	-	-
Technicians/Specialists	6	1	6	0.07
Office/Clerical Employees	3	-	3	0.034
Others**	-	-	-	-
Undergraduate Students Enrollment***	205	-	275	3.11
Graduate Students Enrollment	50	-	67	0.76

Petroleum and Natural Gas Engineering Department (2009-2010 Spring)

	HEAD COUNT		FTE	RATIO TO FACULTY
	FT	PT		
Administrative	3	-	1.5	
Faculty (tenure-track)	8	1	8	
Other Faculty (excluding student Assistants)	9	-	9	
Student Teaching Assistants	6	-	12	0.37
Student Research Assistants	-	-	-	-
Technicians/Specialists	1	-	1	0.031
Office/Clerical Employees	1	-	1	0.031
Others	-	-	-	-
Undergraduate Students Enrollment	223	-	299	9.2
Graduate Students Enrollment	26	-	35	1.08

Table D-4. Personnel and Students

Geophysical Engineering Department (2009-2010 Spring)

	HEAD COUNT		FTE	RATIO TO FACULTY
	FT	PT		
Administrative	3	-	1.5	
Faculty (tenure-track)	15	-	15	
Other Faculty (excluding student Assistants)	-	-	-	
Student Teaching Assistants	9	-	18	0.49
Student Research Assistants	-	-	-	-
Technicians/Specialists	1		1	0.03
Office/Clerical Employees	1	-	1	0.03
Others	-	-	-	-
Undergraduate Students Enrollment	148	-	198	5.43
Graduate Students Enrollment	25	-	33.5	0.92

Mineral Processing Engineering Department (2009-2010 Spring)

	HEAD COUNT		FTE	RATIO TO FACULTY
	FT	PT		
Administrative	3	-	1.5	
Faculty (tenure-track)	13	-	13	
Other Faculty (excluding student Assistants)	-	-	-	
Student Teaching Assistants	6	-	12	0.41
Student Research Assistants	-	-	-	-
Technicians/Specialists	2		2	0.07
Office/Clerical Employees	1	-	1	0.034
Others	-	-	-	-
Undergraduate Students Enrollment	65	-	87	2.95
Graduate Students Enrollment	-	-	-	-

Table D-5. Program Enrollment and Degree Data
İTÜ- For all undergraduate programs

	Academic Year		Enrollment Year					Total U Grad	Total Grad	Degrees Conferred		
			Prep	1st	2nd	3rd	4th			B.Sc.	M.Sc.	Ph.D.
CURRENT	2009	F	3430	45	371	261	298	17274	7129	*	*	*
	- 2010	T		28	4	6	6					
		P	-	-	-	-	-	-	-	-	-	-
		T										
1	2008	F	3103	45	317	233	297	16143	6022	2199	1024	129
	- 2009	T		53	5	7	5					
		P	-	-	-	-	-	-	-	-	-	-
		T										
2	2007	F	2998	39	278	230	290	14958	6094	2189	875	122
	- 2008	T		59	9	4	8					
		P	-	-	-	-	-	-	-	-	-	-
		T										
3	2006	F	2751	33	289	231	277	14115	6430	2067	833	130
	- 2007	T		70	7	9	8					
		P	-	-	-	-	-	-	-	-	-	-
		T										
4	2005	F	2453	31	282	216	289	13481	6177	2088	958	100
	- 2006	T		44	5	0	9					
		P	-	-	-	-	-	-	-	-	-	-
		T										
5	2004	F	1896	32	265	219	263	12614	4694	2040	829	106
	- 2005	T		34	3	9	2					
		P	-	-	-	-	-	-	-	-	-	-
		T										

* Degrees Conferred values for Year 2009-2010 will be available upon the visit.

Prep: The students enrolled in the Preparatory English Program

4th : All the students enrolled 4 years and more are considered as 4th year students.

* Total Graduates indicates number of enrolled M.Sc. and Ph.D. students, respectively.

Table D-5. Student enrollment in Faculty of Mines for 2009-2010 academic years

	Mining Engineering				Geological Engineering .				Petroleum&NG Engineering				Geophysical Engineering				Mineral Processing				Total Faculty of Mines			
Enrollment Classes	W	M	F	T	W	M	F	T	F	M	F	T	W	M	F	T	W	M	F	T	F	M	F	T
Prep School	15	55	2	72	25	30	3	58	6	44	8	58	25	23	0	48	10	24	1	35	81	176	14	271
Freshmen	16	69	3	88	16	41	3	60	5	53	14	72	27	40	0	67	15	20	1	36	79	223	21	323
Sophomore	21	53	1	75	19	37	0	56	4	51	10	65	5	25	1	31	9	14	0	23	58	180	12	250
Junior	6	27	0	33	20	18	0	38	5	24	11	40	11	16	0	27	2	4	0	6	44	89	11	144
Senior	8	32	2	42	18	30	3	51	5	35	6	46	5	18	0	23	0	0	0	0	36	115	11	162
Total	66	236	8	310	98	166	8	263	25	207	49	281	73	122	1	196	36	62	2	100	298 (26 %)	793	68 (6 %)	1150

* Department of Mineral Processing Engineering was established in 2007.

W: female, M: male student

Table D-5.2. Transfer, Double Major, Minor and ERASMUS Students

İTÜ- For all undergraduate programs

Academic Year	Number of Transfer Students From Other Universities	Number of Transfer Students From Two-Year Institutes	Number of Transfer Students From Within the University	Number of Double Major Program Students	Number of Minor Program Students	Number of ERASMUS Students	
						Incoming	Outgoing
2005-2006	29	37	120	120	0	10	144
2006-2007	32	48	116	134	0	38	175
2007-2008	35	54	115	121	64	36	252
2008-2009	31	56	108	134	50	55	290
2009-2010	29	51	114	165	106	78	296

Mining Engineering	Number of Transfer Students From Other Universities	Number of Transfer Students From Two-Year Institutes	Number of Transfer Students From Within the University	Number of Double Major Program Students	Number of Minor Program Students	Number of ERASMUS Students	
						Incoming	Outgoing
2005-2006	0	6	0	0	0	0	4
2006-2007	3	5	0	0	0	0	1
2007-2008	1	5	0	0	1	0	4
2008-2009	0	6	0	0	4	0	3
2009-2010	1	4	0	0	3	1	4
Geological Engineering							
2005-2006	2	2	0	1	0	0	0
2006-2007	2	1	0	2	0	0	0
2007-2008	1	2	0	1	0	0	2
2008-2009	1	3	0	0	0	2	0
2009-2010	0	3	0	1	2	1	5
Petroleum and NG Engineering							
2005-2006	0	1	1	0	0	0	0
2006-2007	0	1	3	0	0	0	0
2007-2008	0	1	6	1	0	0	3
2008-2009	0	1	3	1	2	0	1
2009-2010	0	1	2	3	1	0	0
Geophysical Engineering							
2005-2006	1	1	0	0	0	0	1
2006-2007	1	2	0	0	0	0	2
2007-2008	1	2	0	0	3	0	1
2008-2009	1	2	0	1	0	0	3
2009-2010	3	2	0	1	3	0	0

Table D-5.3. Bilateral Agreements between İTÜ and EU Universities
(Erasmus Student Mobility Program)

<i>University</i>	<i>Country</i>	<i>Department</i>	<i>Duration</i>
Montan Universitat Leoben	Austria	Mining, Mineral Processing	3BSc-1MSc-1PhD/30 months
Madrid University	Spain	Mining, Mineral Processing	2BSc/20 months
Tübingen University	Germany	Mining, MP, Geological,	3BSc-1MSc-1PhD/40 months
RWTH Aachen	Germany	Mining, MP	5BSc/60 months
		Geological	2BSc-1MSc-1PhD/20 months
Bremen University	Germany	Geological	2BSc-1MSc-1PhD/20 months
Bonn University	Germany	Geological	1BSc/10 months
Bochum Technische Fachhochschule	Germany	Geological	2BSc-2MSc/20 months
Bern University	Swiss	Geological	1BSc-1MSc-1PhD/18 months
Aristotale University	Greece	Geological	2MSc-PhD/6 months
TU Freiberg Bergakademie	Germany	Petroleum NG	2BSc/24 months
Deft University of Technology	Holland	Geophysical	2BSc/24 months
De Nantes University	France	Geophysical	2BSc/20 months

Table D-5.4. Student Industry Trainings for Five Departments of Faculty of Mines for Last Three Years.

The number of the Student Training in Faculty of Mines																		
	Mining Engineering Dept.			Geological Engineering Dept.			Petroleum & NG Engineering Dept.			Geophysical Engineering Dept.			Mineral Processing Dept.			Faculty of Mines		
YEARS	Public Sector	Private sector	Total	Public Sector	Private sector	Total	Public Sector	Private sector	Total	Public Sector	Private sector	Total	Public Sector	Private sector	Total	Public Sector	Private sector	Total
2007	15	60	75	23	34	57	31	42	73	9	27	36	-	-	-	176	14	271
2008	25	58	83	23	33	56	51	34	85	13	16	29	-	-	-	223	21	323
2009	20	65	85	36	35	71	48	32	80	12	26	38	1	10	11	180	12	250

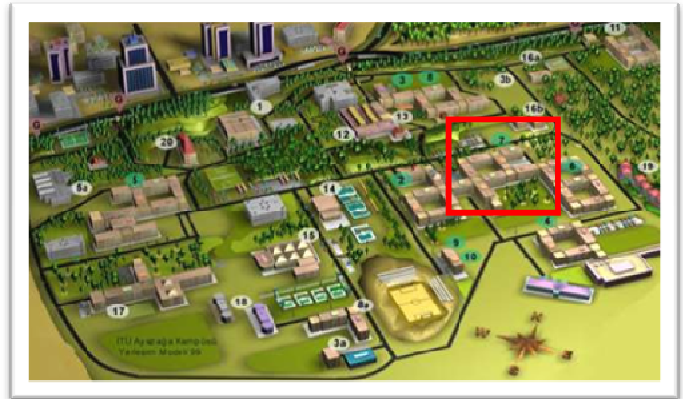
Table D-6. Faculty Salary in TL
is defined as “monthly net income”,
excluding additional incomes from research projects
(Academic Year 2009 – 2010)

	Professor	Associate Professor	Assistant Professor	Instructor
High	3.649.96	2.514.09	2.077.64	1.787.14
Mean	3.400.00	2.400.00	1.950.00	
Low	2.816.98	2.341.82	1.806.48	

Table D-9. Scientific activities of the Faculty of Mines in 2008-2009 Period

	Min	Geol	Pet	Geop	Min P	Faculty of Mines
SCI(A), SSCI, AHCI SCI(B) Issues	3	26	4	8	6	47
Other Indexes	1	5	1			7
Total International Issues	4	31	5	8	6	54
<u>International (other)</u> Expanded Abstracts	12	8	15	17	29	81
Abstracts		57		19	1	77
Book Authors		1	1			2
Book Chapters		3		1		4
<u>National</u> Issues		4	1	1		6
Abstracts	2	45	10	14	10	81
<u>Books</u> Author		1			2	3
Chapter				1		1
Editorial						1
<u>Projects</u>	13	12		8	32	65

Approximately 48 courses of the Faculty of Mines are available in Ninova ITU e-learning system: <http://ninova.itu.edu.tr/en/courses/faculty-of-mines/>



<http://www.mines.itu.edu.tr>

